

Product datasheet for **TA700150**

Leukotriene A4 hydrolase (LTA4H) Biotinylated Mouse Monoclonal Detection Antibody (Biotin conjugated) [Clone ID: OTI1E9]

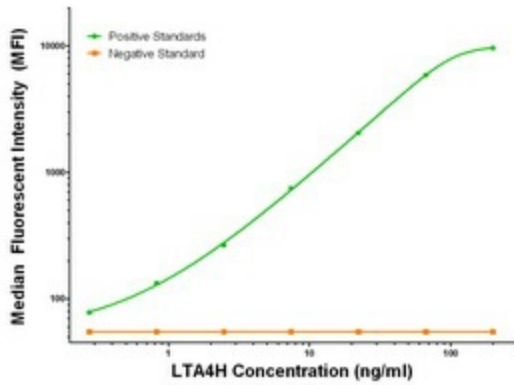
Product data:

| | |
|-----------------------|---|
| Product Type: | Primary Antibodies |
| Clone Name: | OTI1E9 |
| Applications: | LMNX |
| Recommended Dilution: | 1:250 - 1:1000 |
| Reactivity: | Human, Mouse, Rat |
| Host: | Mouse |
| Isotype: | IgG1 |
| Clonality: | Monoclonal |
| Immunogen: | Full length human recombinant protein of human LTA4H (NM_000895) produced in HEK293T cell. |
| Formulation: | Stored in PBS (pH 7.4) with 0.05% sodium azide, 10mg/ml BSA, 50% glycerol |
| Concentration: | 0.5 mg/ml |
| Conjugation: | Biotin |
| Storage: | Store at -20°C as received. |
| Stability: | Stable for 12 months from date of receipt. |
| Gene Name: | leukotriene A4 hydrolase |
| Database Link: | NP_000886 Entrez Gene 16993 MouseEntrez Gene 299732 RatEntrez Gene 4048 Human P09960 |
| Synonyms: | leukotriene A4 hydrolase |
| Matched ELISA Pair: | TA600150 |
| Protein Families: | Druggable Genome, Protease |
| Protein Pathways: | Arachidonic acid metabolism, Metabolic pathways |



[View online »](#)

Product images:



LTA4H Luminex Elisa with 2A9 Capture ([TA600150]) and 1E9 Detection (TA700150) Antibodies. Substrate used: Recombinant Human LTA4H ([TP307617])