

Product datasheet for **TA700147**

ARH (LDLRAP1) Biotinylated Mouse Monoclonal Detection Antibody (Biotin conjugated) **[Clone ID: OTI7G2]**

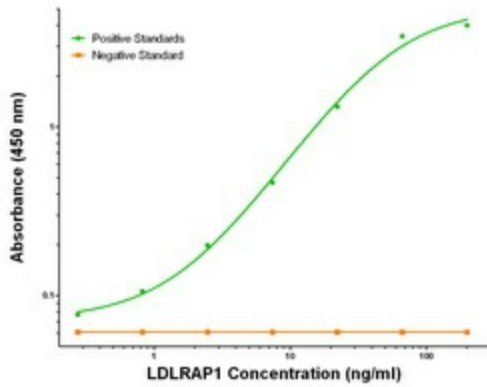
Product data:

Product Type:	Primary Antibodies
Clone Name:	OTI7G2
Applications:	ELISA, LMNX
Recommended Dilution:	1:250 - 1:1000
Reactivity:	Human, Mouse, Rat
Host:	Mouse
Isotype:	IgG1
Clonality:	Monoclonal
Immunogen:	Full length human recombinant protein of human LDLRAP1 (NM_015627) produced in HEK293T cell.
Formulation:	Stored in PBS (pH 7.4) with 0.05% sodium azide, 10mg/ml BSA, 50% glycerol
Concentration:	0.5 mg/ml
Conjugation:	Biotin
Storage:	Store at -20°C as received.
Stability:	Stable for 12 months from date of receipt.
Gene Name:	low density lipoprotein receptor adaptor protein 1
Database Link:	NP_056442 Entrez Gene 100017 MouseEntrez Gene 500564 RatEntrez Gene 26119 Human Q5SW96
Synonyms:	ARH; ARH1; ARH2; FHCB1; FHCB2
Matched ELISA Pair:	TA600146, TA600147, TA600148
Protein Families:	Druggable Genome
Protein Pathways:	Endocytosis

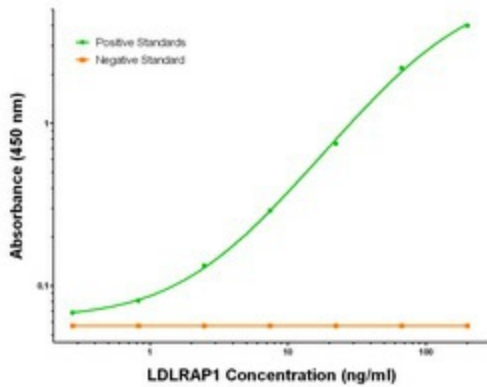


[View online »](#)

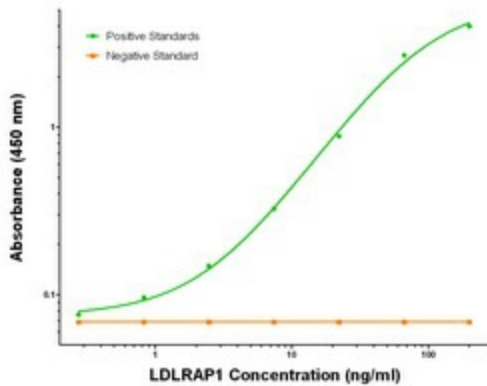
Product images:



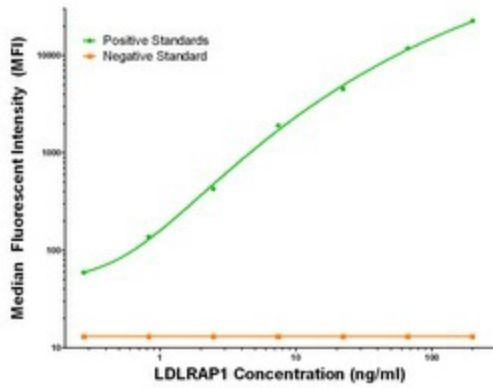
LDLRAP1 Elisa with 2B2 Capture ([TA600146]) and 7G2 Detection (TA700147) Antibodies. Substrate used: Recombinant Human LDLRAP1 ([TP306643])



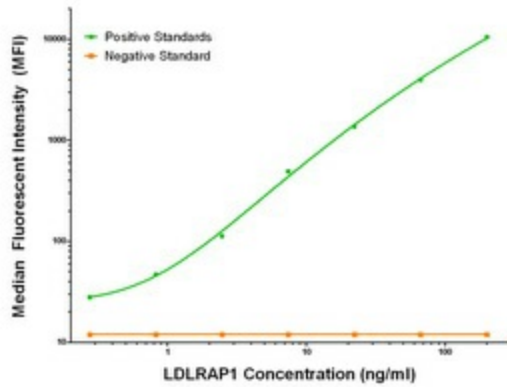
LDLRAP1 Elisa with 4B10 Capture ([TA600147]) and 7G2 Detection (TA700147) Antibodies. Substrate used: Recombinant Human LDLRAP1 ([TP306643])



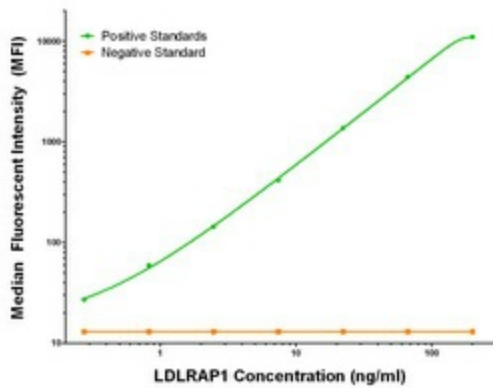
LDLRAP1 Elisa with 7E11 Capture ([TA600148]) and 7G2 Detection (TA700147) Antibodies. Substrate used: Recombinant Human LDLRAP1 ([TP306643])



LDLRAP1 Luminex Elisa with 2B2 Capture ([TA600146]) and 7G2 Detection (TA700147) Antibodies. Substrate used: Recombinant Human LDLRAP1 ([TP306643])



LDLRAP1 Luminex Elisa with 4B10 Capture ([TA600147]) and 7G2 Detection (TA700147) Antibodies. Substrate used: Recombinant Human LDLRAP1 ([TP306643])



LDLRAP1 Luminex Elisa with 7E11 Capture ([TA600148]) and 7G2 Detection (TA700147) Antibodies. Substrate used: Recombinant Human LDLRAP1 ([TP306643])