

Product datasheet for **TA700145**

Prolactin (PRL) Biotinylated Mouse Monoclonal Detection Antibody (Biotin conjugated) [Clone ID: OTI6B1]

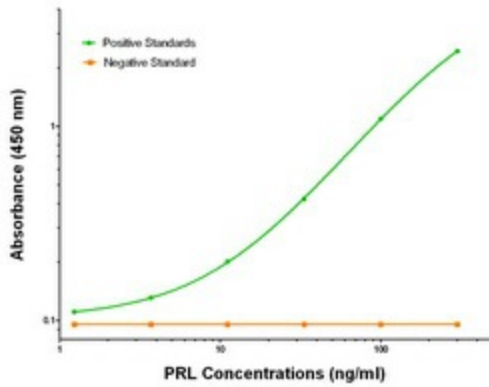
Product data:

Product Type:	Primary Antibodies
Clone Name:	OTI6B1
Applications:	ELISA, LMNX
Recommended Dilution:	1:250 - 1:1000
Reactivity:	Human
Host:	Mouse
Isotype:	IgG1
Clonality:	Monoclonal
Immunogen:	Full length human recombinant protein of human PRL (NM_000948) produced in HEK293T cell.
Formulation:	Stored in PBS (pH 7.4) with 0.05% sodium azide, 10mg/ml BSA, 50% glycerol
Concentration:	0.5 mg/ml
Conjugation:	Biotin
Storage:	Store at -20°C as received.
Stability:	Stable for 12 months from date of receipt.
Gene Name:	prolactin
Database Link:	NP_000939 Entrez Gene 5617 Human P01236
Synonyms:	GHA1
Matched ELISA Pair:	TA600145
Protein Families:	Druggable Genome, Secreted Protein
Protein Pathways:	Cytokine-cytokine receptor interaction, Jak-STAT signaling pathway, Neuroactive ligand-receptor interaction

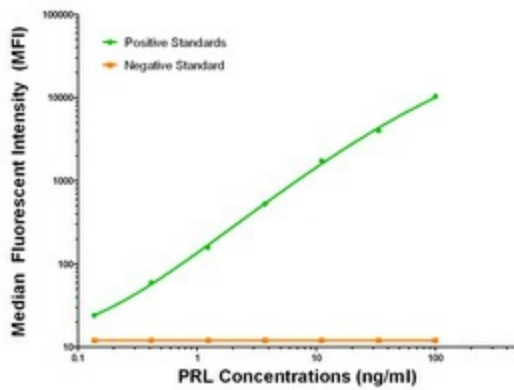


[View online »](#)

Product images:



PRL Elisa with 2B7 Capture ([TA600145]) and 6B1 Detection (TA700145) Antibodies. Substrate used: Recombinant Human PRL ([TP305627])



PRL Luminex Elisa with 2B7 Capture ([TA600145]) and 6B1 Detection (TA700145) Antibodies. Substrate used: Recombinant Human PRL ([TP305627])