

## Product datasheet for **TA700137**

### **PLK1 Biotinylated Mouse Monoclonal Detection Antibody (Biotin conjugated) [Clone ID: OTI1D4]**

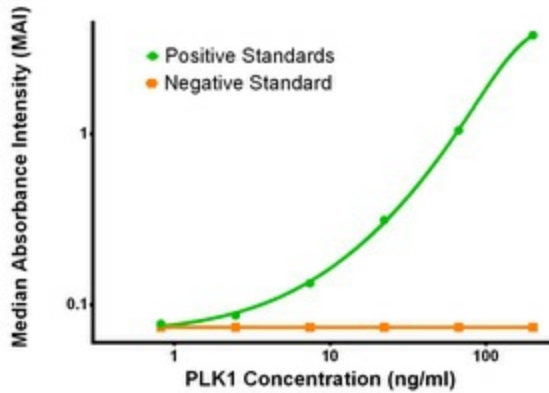
#### **Product data:**

Product Type:	Primary Antibodies
Clone Name:	OTI1D4
Applications:	ELISA, LMNX
Recommended Dilution:	1:250 - 1:1000
Reactivity:	Human, Mouse, Rat
Host:	Mouse
Isotype:	IgG1
Clonality:	Monoclonal
Immunogen:	Full length human recombinant protein of human PLK1 (NP_005021) produced in HEK293T cell.
Formulation:	Stored in PBS (pH 7.4) with 0.05% sodium azide, 10mg/ml BSA, 50% glycerol
Concentration:	0.5 mg/ml
Conjugation:	Biotin
Storage:	Store at -20°C as received.
Stability:	Stable for 12 months from date of receipt.
Gene Name:	polo like kinase 1
Database Link:	<a href="#">NP_005021</a> <a href="#">Entrez Gene 18817 Mouse</a> <a href="#">Entrez Gene 25515 Rat</a> <a href="#">Entrez Gene 5347 Human</a> <a href="#">P53350</a>
Synonyms:	PLK; STPK13
Matched ELISA Pair:	TA600111
Protein Families:	Druggable Genome, Protein Kinase
Protein Pathways:	Cell cycle, Oocyte meiosis, Progesterone-mediated oocyte maturation

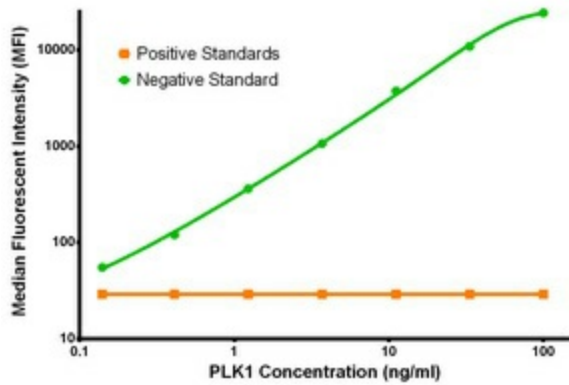


[View online »](#)

Product images:



PLK1 ELISA with 8C12 Capture ([TA600111]) and 1D4 Detection (TA700137) Antibodies. Substrate used: Recombinant Human PLK1 ([TP301795])



PLK1 Luminex with 8C12 Capture ([TA600111]) and 1D4 Detection (TA700137) Antibodies. Substrate used: Recombinant Human PLK1 ([TP301795])