

## Product datasheet for **TA700134**

### **GBA3 Biotinylated Mouse Monoclonal Detection Antibody (Biotin conjugated) [Clone ID: OTI4F10]**

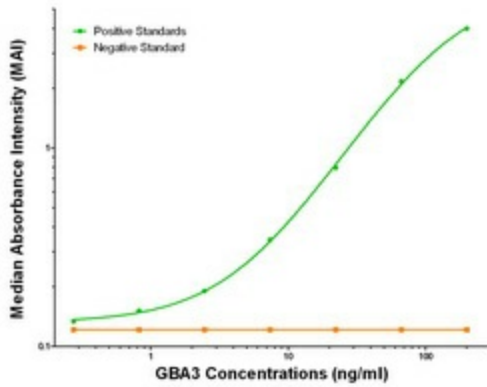
#### **Product data:**

Product Type:	Primary Antibodies
Clone Name:	OTI4F10
Applications:	ELISA, LMNX
Recommended Dilution:	1:250 - 1:1000
Reactivity:	Human
Host:	Mouse
Isotype:	IgG1
Clonality:	Monoclonal
Immunogen:	Full length human recombinant protein of human HPGD (NM_020973) produced in HEK293T cell.
Formulation:	Stored in PBS (pH 7.4) with 0.05% sodium azide, 10mg/ml BSA, 50% glycerol
Concentration:	0.5 mg/ml
Conjugation:	Biotin
Storage:	Store at -20°C as received.
Stability:	Stable for 12 months from date of receipt.
Gene Name:	glucosylceramidase beta 3 (gene/pseudogene)
Database Link:	<a href="#">NP_066024</a> <a href="#">Entrez Gene 57733 Human Q9H227</a>
Synonyms:	CBG; CBGL1; GLUC; KLRP
Matched ELISA Pair:	TA600050
Protein Pathways:	Cyanoamino acid metabolism, Starch and sucrose metabolism

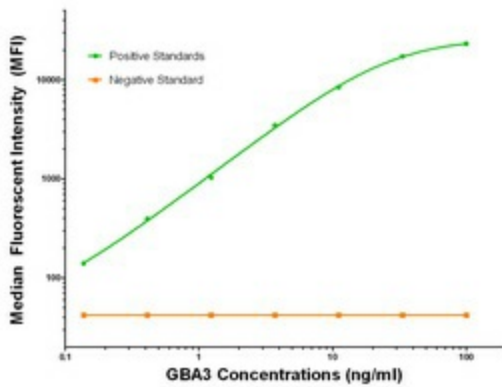


[View online »](#)

**Product images:**



Anti-Tag ELISA with 1B12 Capture ([TA600050]) and GBA3 4F10 Detection (TA700134) Antibodies. Substrate used: Recombinant Human Anti-Tag ([TP311035])



Anti-Tag Luminex with 1B12 Capture ([TA600050]) and GBA3 4F10 Detection (TA700134) Antibodies. Substrate used: Recombinant Human Anti-Tag ([TP311035])