

## Product datasheet for **TA700131**

### **AIPL1 Biotinylated Mouse Monoclonal Detection Antibody (Biotin conjugated) [Clone ID: OTI2B11]**

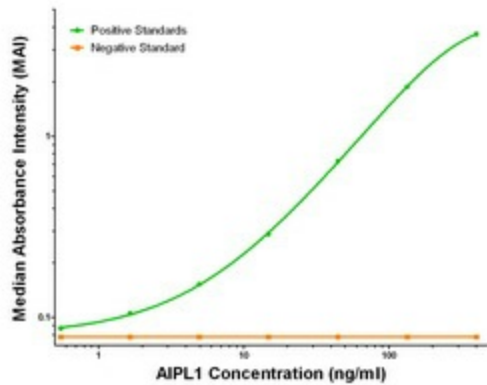
#### **Product data:**

Product Type:	Primary Antibodies
Clone Name:	OTI2B11
Applications:	ELISA, LMNX
Recommended Dilution:	1:250 - 1:1000
Reactivity:	Human, Mouse, Rat
Host:	Mouse
Isotype:	IgG1
Clonality:	Monoclonal
Immunogen:	Full length human recombinant protein of human AIPL1 (NP_055151) produced in HEK293T cell.
Formulation:	Stored in PBS (pH 7.4) with 0.05% sodium azide, 10mg/ml BSA, 50% glycerol
Concentration:	0.5 mg/ml
Conjugation:	Biotin
Storage:	Store at -20°C as received.
Stability:	Stable for 12 months from date of receipt.
Gene Name:	aryl hydrocarbon receptor interacting protein like 1
Database Link:	<a href="#">NP_055151</a> <a href="#">Entrez Gene 59110 Rat</a> <a href="#">Entrez Gene 114230 Mouse</a> <a href="#">Entrez Gene 23746 Human</a> <a href="#">Q9NZN9</a>
Synonyms:	AIPL2; LCA4
Matched ELISA Pair:	TA600080
Protein Families:	Druggable Genome

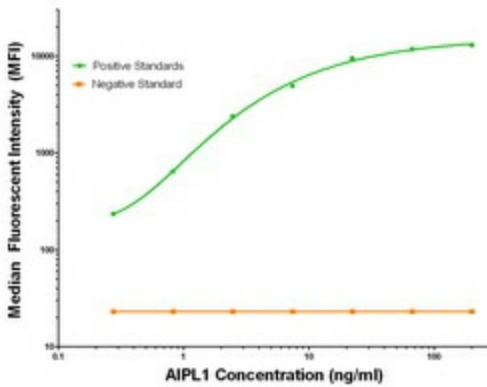


[View online »](#)

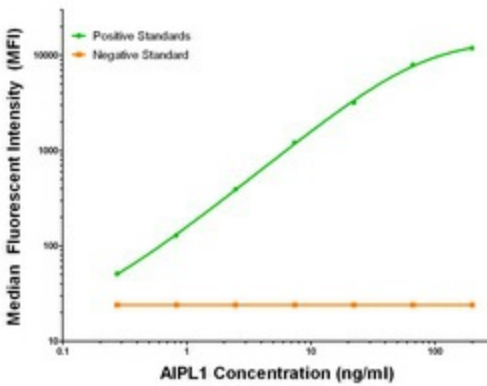
**Product images:**



AIPL1 ELISA with 3B4 Capture ([TA600080]) and 2B11 Detection (TA700131) Antibodies. Substrate used: Recombinant Human AIPL1 ([TP304079])



AIPL1 Luminex with 3B4 Capture ([TA600080]) and 2B11 Detection (TA700131) Antibodies. Substrate used: Recombinant Human AIPL1 ([TP304079])



AIPL1 Luminex with 2D11 Capture ([TA600079]) and 2B11 Detection (TA700131) Antibodies. Substrate used: Recombinant Human AIPL1 ([TP304079])