

Product datasheet for TA700127

SPR Biotinylated detection Mouse Monoclonal Antibody [Clone ID: OTI3C8]

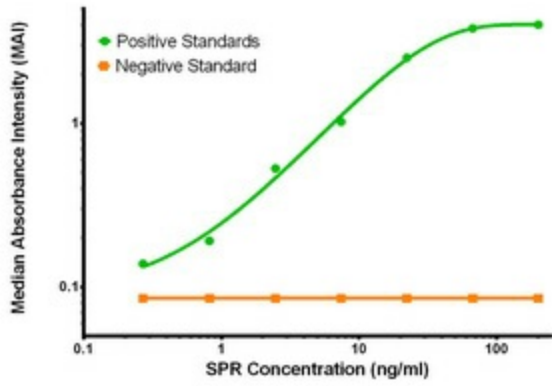
Product data:

Product Type:	Primary Antibodies
Clone Name:	OTI3C8
Applications:	ELISA, LMNX
Recommend Dilution:	1:250 - 1:1000
Reactivity:	Human
Host:	Mouse
Isotype:	IgG1
Clonality:	Monoclonal
Immunogen:	Full length human recombinant protein of human SPR (NP_003115) produced in HEK293T cell.
Formulation:	Stored in PBS (pH 7.4) with 0.05% sodium azide, 10mg/ml BSA, 50% glycerol
Concentration:	0.5 mg/ml
Gene Name:	sepiapterin reductase
Database Link:	NP_003115 Entrez Gene 6697 Human
Synonyms:	SDR38C1
Matched ELISA Pair:	TA600127
Protein Families:	Druggable Genome
Protein Pathways:	Folate biosynthesis, Metabolic pathways

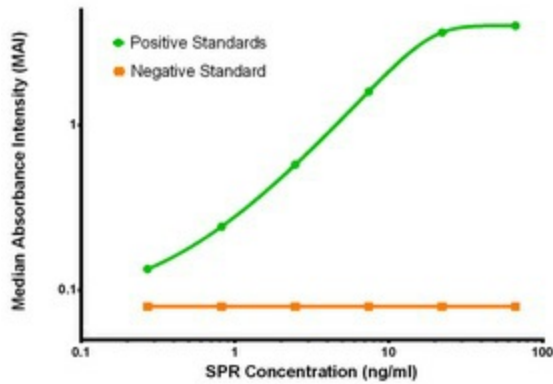


[View online »](#)

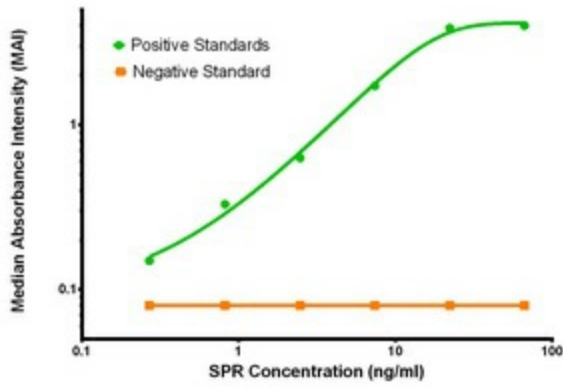
Product images:



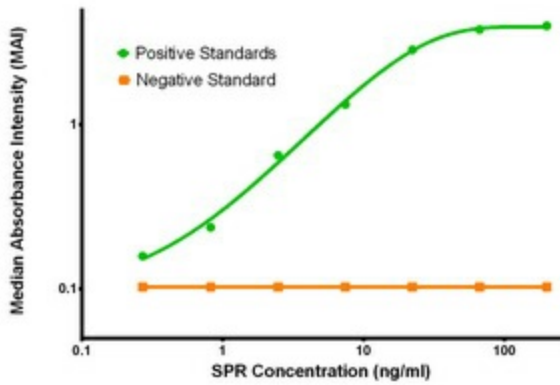
SPR ELISA with 3D6 Capture (TA600129) and 3C8 Detection (TA700127) Antibodies. Substrate used: Recombinant Human SPR (TP305679)



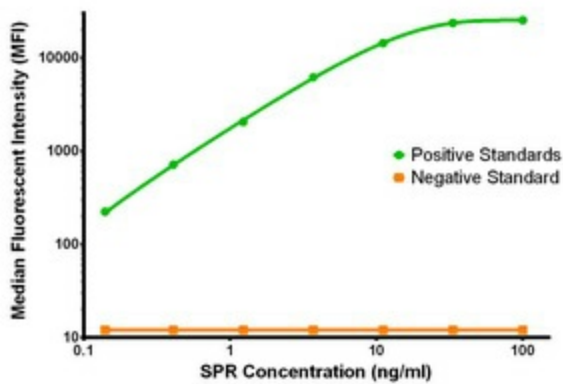
SPR ELISA with 3A9 Capture (TA600128) and 3C8 Detection (TA700127) Antibodies. Substrate used: Recombinant Human SPR (TP305679)



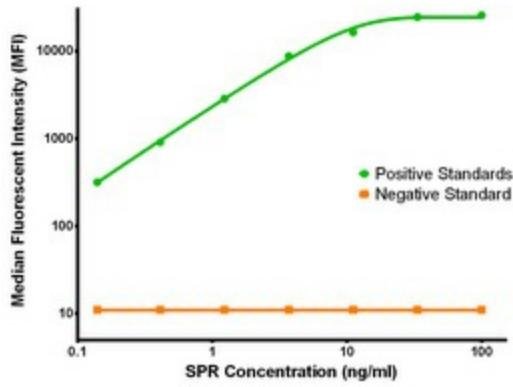
SPR ELISA with 1F4 Capture (TA600127) and 3C8 Detection (TA700127) Antibodies. Substrate used: Recombinant Human SPR (TP305679)



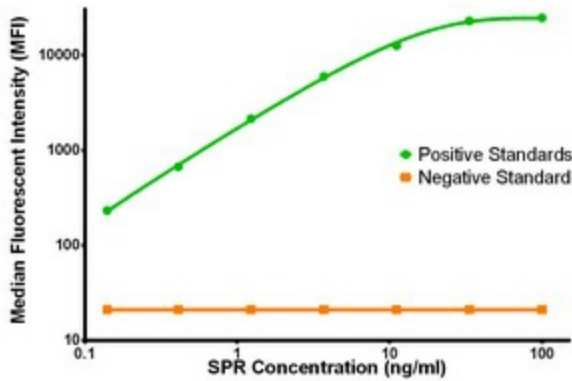
SPR ELISA with 3E3 Capture (TA600130) and 3C8 Detection (TA700127) Antibodies. Substrate used: Recombinant Human SPR (TP305679)



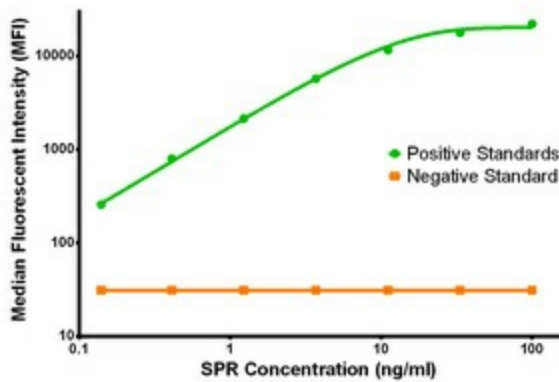
SPR Luminex with 3D6 Capture (TA600129) and 3C8 Detection (TA700127) Antibodies. Substrate used: Recombinant Human SPR (TP305679)



SPR Luminex with 3A9 Capture (TA600128) and 3C8 Detection (TA700127) Antibodies. Substrate used: Recombinant Human SPR (TP305679)



SPR Luminex with 1F4 Capture (TA600127) and 3C8 Detection (TA700127) Antibodies. Substrate used: Recombinant Human SPR (TP300619)



SPR Luminex with 3E3 Capture (TA600130) and 3C8 Detection (TA700127) Antibodies. Substrate used: Recombinant Human SPR (TP300619)