

Product datasheet for **TA700120**

Spermine synthase (SMS) Biotinylated Mouse Monoclonal Detection Antibody (Biotin conjugated) [Clone ID: OTI2G8]

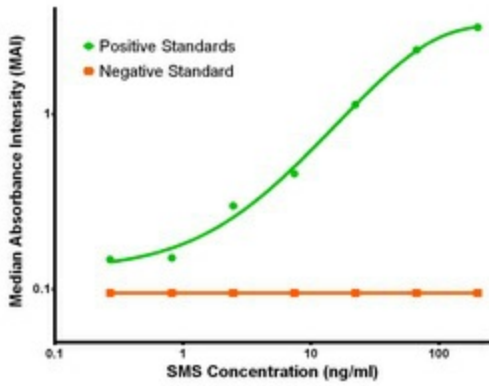
Product data:

Product Type:	Primary Antibodies
Clone Name:	OTI2G8
Applications:	ELISA, LMNX
Recommended Dilution:	1:250 - 1:1000
Reactivity:	Human, Mouse, Rat
Host:	Mouse
Isotype:	IgG1
Clonality:	Monoclonal
Immunogen:	Full length human recombinant protein of human SMS (NP_004586) produced in HEK293T cell.
Formulation:	Stored in PBS (pH 7.4) with 0.05% sodium azide, 10mg/ml BSA, 50% glycerol
Concentration:	0.5 mg/ml
Conjugation:	Biotin
Storage:	Store at -20°C as received.
Stability:	Stable for 12 months from date of receipt.
Gene Name:	spermine synthase
Database Link:	NP_004586 Entrez Gene 20603 Mouse Entrez Gene 363469 Rat Entrez Gene 6611 Human P52788
Synonyms:	MRSR; SPMSY; SpS; SRS
Matched ELISA Pair:	TA600120
Protein Pathways:	Arginine and proline metabolism, beta-Alanine metabolism, Cysteine and methionine metabolism, Glutathione metabolism, Metabolic pathways

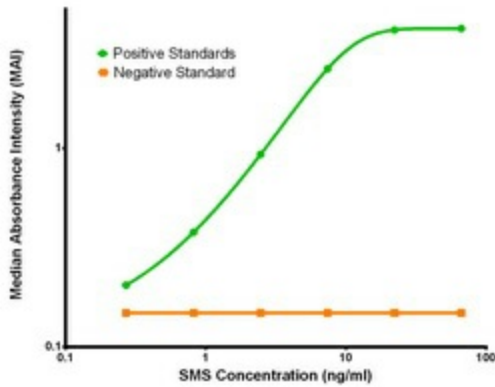


[View online »](#)

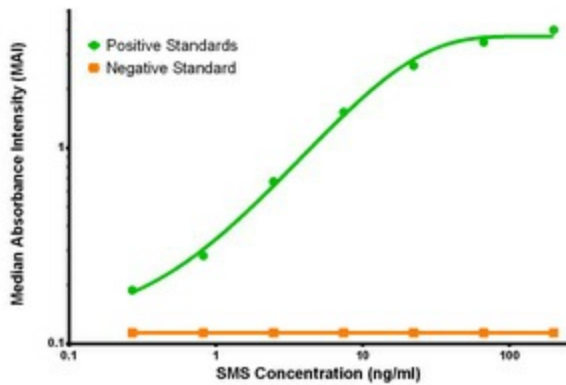
Product images:



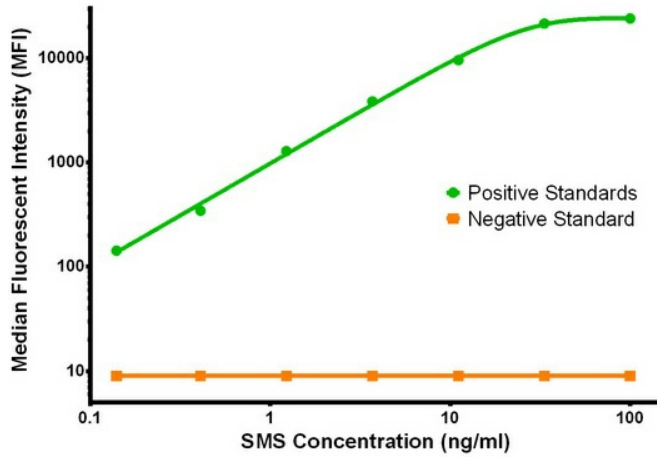
SMS ELISA with 5C12 Capture ([TA600121]) and 2G8 Detection (TA700120) Antibodies. Substrate used: Recombinant Human SMS ([TP300619])



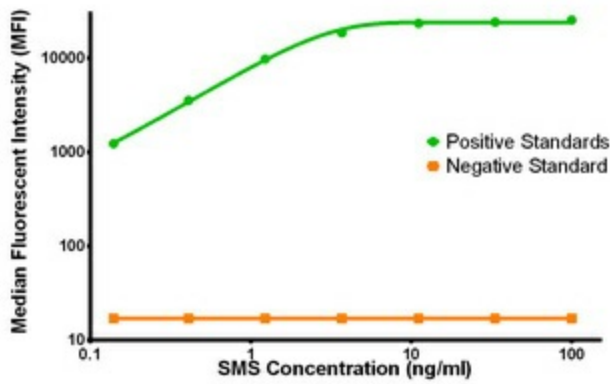
SMS ELISA with 5F2 Capture ([TA600122]) and 2G8 Detection (TA700120) Antibodies. Substrate used: Recombinant Human SMS ([TP300619])



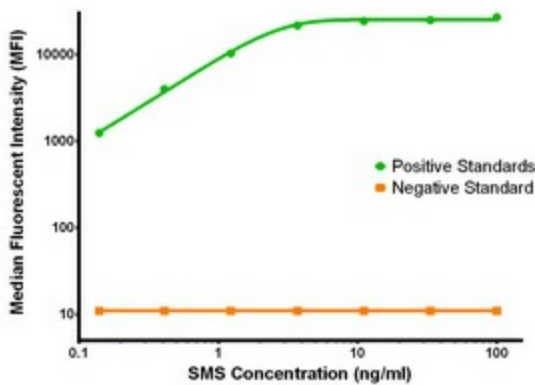
SMS ELISA with 3C9 Capture ([TA600120]) and 2G8 Detection (TA700120) Antibodies. Substrate used: Recombinant Human SMS ([TP300619])



SMS Luminex with 5C12 Capture ([TA600121]) and 2G8 Detection (TA700120) Antibodies. Substrate used: Recombinant Human SMS ([TP300619])



SMS Luminex with 5F2 Capture ([TA600122]) and 2G8 Detection (TA700120) Antibodies. Substrate used: Recombinant Human SMS ([TP300619])



SMS Luminex with 3C9 Capture ([TA600120]) and 2G8 Detection (TA700120) Antibodies. Substrate used: Recombinant Human SMS ([TP300619])