

Product datasheet for **TA700116**

RBBP9 Biotinylated Mouse Monoclonal Detection Antibody (Biotin conjugated) [Clone ID: OTI2G2]

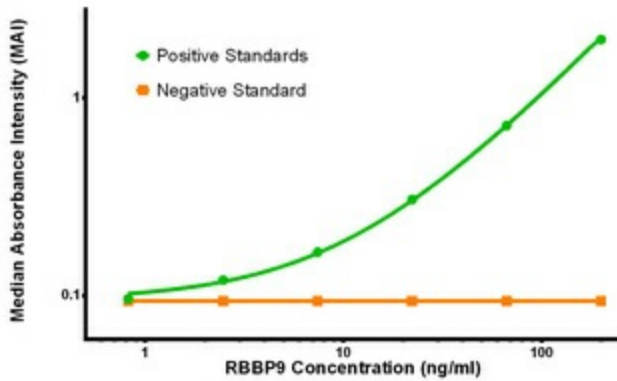
Product data:

| | |
|-----------------------|--------------------------------------------------------------------------------------------|
| Product Type: | Primary Antibodies |
| Clone Name: | OTI2G2 |
| Applications: | ELISA, LMNX |
| Recommended Dilution: | 1:250 - 1:1000 |
| Reactivity: | Human, Mouse, Rat |
| Host: | Mouse |
| Isotype: | IgG1 |
| Clonality: | Monoclonal |
| Immunogen: | Full length human recombinant protein of human RBBP9 (NM_006606) produced in HEK293T cell. |
| Formulation: | Stored in PBS (pH 7.4) with 0.05% sodium azide, 10mg/ml BSA, 50% glycerol |
| Concentration: | 0.5 mg/ml |
| Conjugation: | Biotin |
| Storage: | Store at -20°C as received. |
| Stability: | Stable for 12 months from date of receipt. |
| Gene Name: | RB binding protein 9, serine hydrolase |
| Database Link: | NP_006597 Entrez Gene 10741 Human O75884 |
| Synonyms: | BOG; RBBP10 |
| Matched ELISA Pair: | TA600117 |

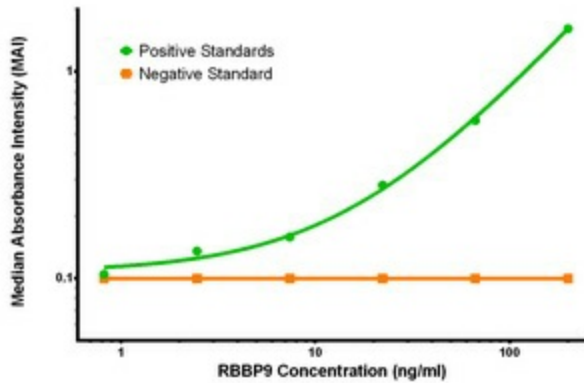


[View online »](#)

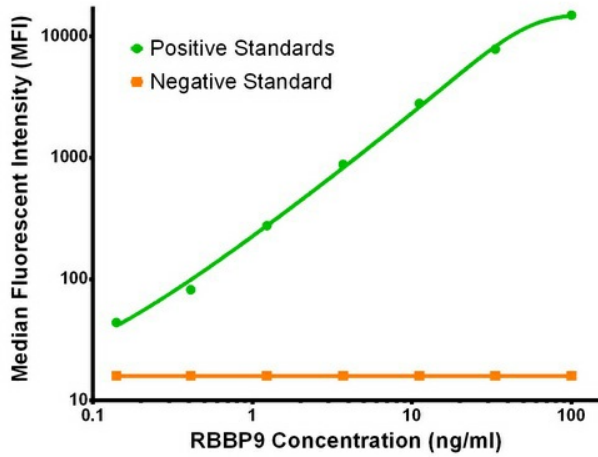
Product images:



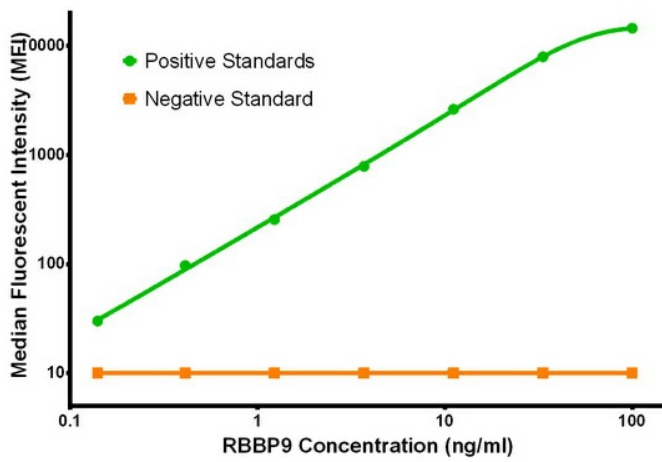
RBBP9 ELISA with 4G3 Capture ([TA600117]) and 2G2 Detection (TA700116) Antibodies. Substrate used: Recombinant Human RBBP9 ([TP302090])



RBBP9 ELISA with 4G9 Capture ([TA600118]) and 2G2 Detection (TA700116) Antibodies. Substrate used: Recombinant Human RBBP9 ([TP302090])



RBBP9 Luminex with 4G3 Capture ([TA600117]) and 2G2 Detection (TA700116) Antibodies. Substrate used: Recombinant Human RBBP9 ([TP302090])



RBBP9 Luminex with 4G9 Capture ([TA600118]) and 2G2 Detection (TA700116) Antibodies. Substrate used: Recombinant Human RBBP9 ([TP302090])