

Product datasheet for **TA700115**

RBBP9 Biotinylated Mouse Monoclonal Detection Antibody (Biotin conjugated) [Clone ID: OT11C10]

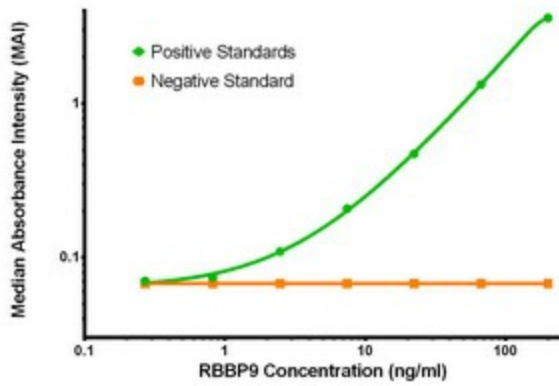
Product data:

Product Type:	Primary Antibodies
Clone Name:	OT11C10
Applications:	ELISA, LMNX
Recommended Dilution:	1:250 - 1:1000
Reactivity:	Human, Mouse, Rat
Host:	Mouse
Isotype:	IgG1
Clonality:	Monoclonal
Immunogen:	Full length human recombinant protein of human RBBP9 (NM_006606) produced in HEK293T cell.
Formulation:	Stored in PBS (pH 7.4) with 0.05% sodium azide, 10mg/ml BSA, 50% glycerol
Concentration:	0.5 mg/ml
Conjugation:	Biotin
Storage:	Store at -20°C as received.
Stability:	Stable for 12 months from date of receipt.
Gene Name:	RB binding protein 9, serine hydrolase
Database Link:	NP_006597 Entrez Gene 10741 Human O75884
Synonyms:	BOG; RBBP10
Matched ELISA Pair:	TA600117, TA600115, TA600116, TA600118

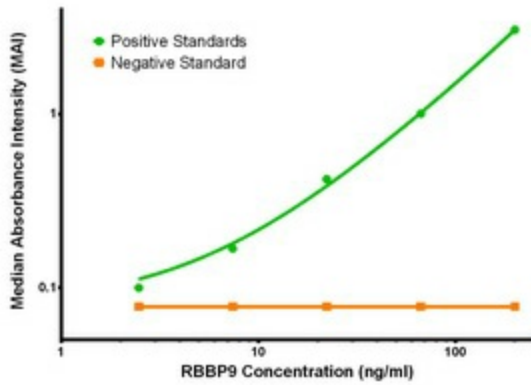


[View online »](#)

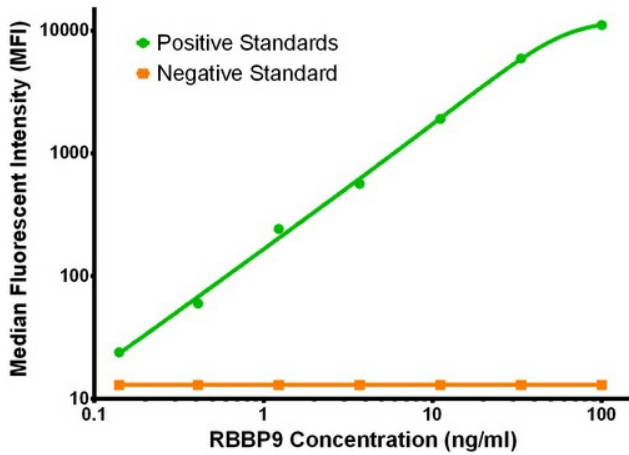
Product images:



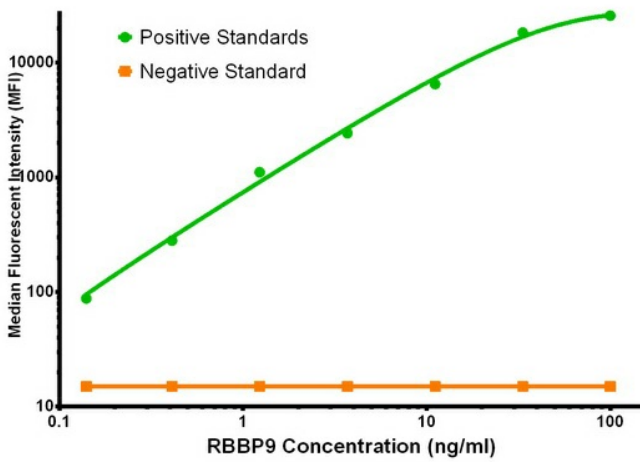
RBBP9 ELISA with 4G3 Capture ([TA600117]) and 1C10 Detection (TA700115) Antibodies. Substrate used: Recombinant Human RBBP9 ([TP302090])



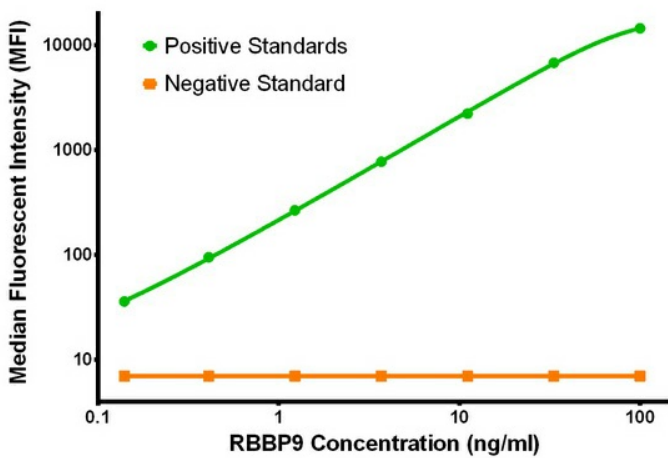
RBBP9 ELISA with 4G9 Capture ([TA600118]) and 1C10 Detection (TA700115) Antibodies. Substrate used: Recombinant Human RBBP9 ([TP302090])



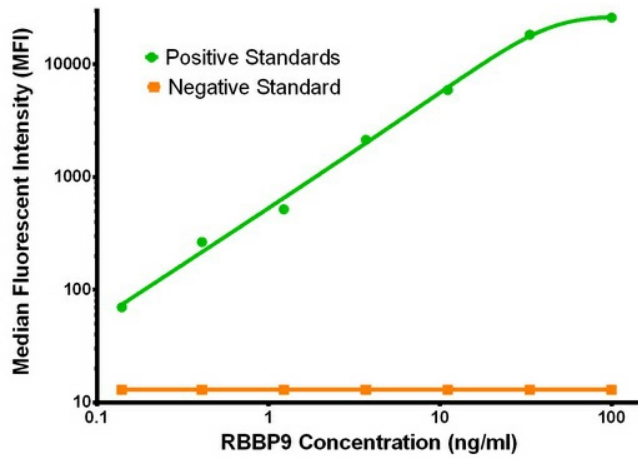
RBBP9 Luminex with 2G2 Capture ([TA600115]) and 1C10 Detection (TA700115) Antibodies. Substrate used: Recombinant Human RBBP9 ([TP302090])



RBBP9 Luminex with 4G3 Capture ([TA600117]) and 1C10 Detection (TA700115) Antibodies. Substrate used: Recombinant Human RBBP9 ([TP302090])



RBBP9 Luminex with 4E1 Capture ([TA600116]) and 1C10 Detection (TA700115) Antibodies. Substrate used: Recombinant Human RBBP9 ([TP302090])



RBBP9 Luminex with 4G9 Capture ([TA600118]) and 1C10 Detection (TA700115) Antibodies. Substrate used: Recombinant Human RBBP9 ([TP302090])