

## Product datasheet for **TA700114**

### **PON1 Biotinylated Mouse Monoclonal Detection Antibody (Biotin conjugated) [Clone ID: OTI2D4]**

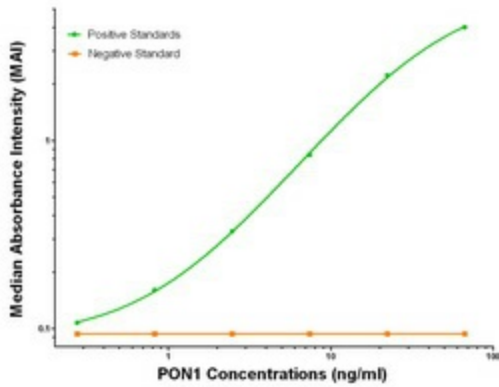
#### **Product data:**

Product Type:	Primary Antibodies
Clone Name:	OTI2D4
Applications:	ELISA, LMNX
Recommended Dilution:	1:250 - 1:1000
Reactivity:	Human
Host:	Mouse
Isotype:	IgG1
Clonality:	Monoclonal
Immunogen:	Full length human recombinant protein of human HPGD (NM_000446) produced in HEK293T cell.
Formulation:	Stored in PBS (pH 7.4) with 0.05% sodium azide, 10mg/ml BSA, 50% glycerol
Concentration:	0.5 mg/ml
Conjugation:	Biotin
Storage:	Store at -20°C as received.
Stability:	Stable for 12 months from date of receipt.
Gene Name:	paraoxonase 1
Database Link:	<a href="#">NP_000437</a> <a href="#">Entrez Gene 5444 Human P27169</a>
Synonyms:	ESA; MVCD5; PON
Matched ELISA Pair:	TA600112
Protein Families:	Druggable Genome, Secreted Protein
Protein Pathways:	Metabolic pathways

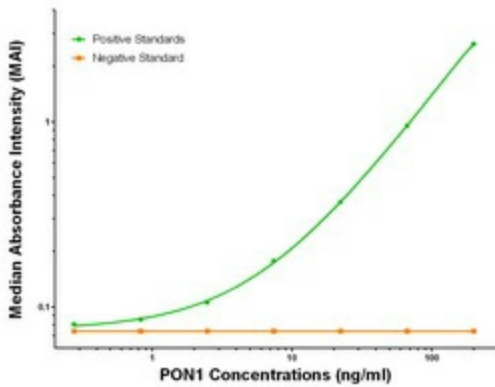


[View online »](#)

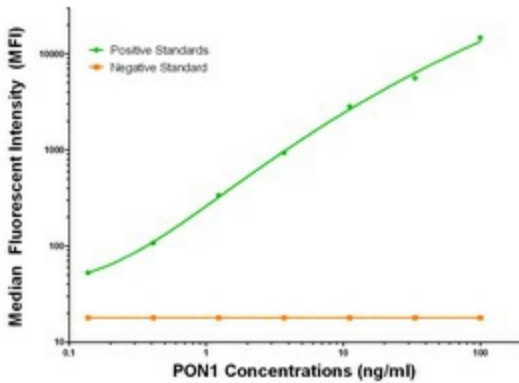
**Product images:**



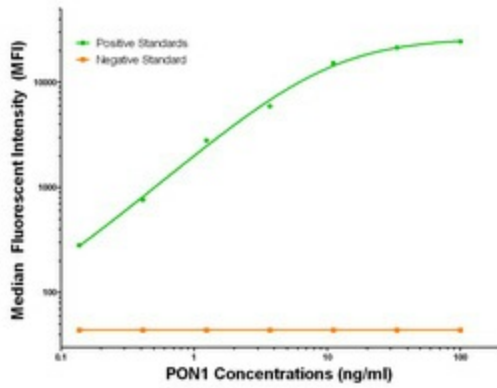
PON1 ELISA with 2A6 Capture ([TA600113]) and 2D4 Detection (TA700114) Antibodies. Substrate used: Recombinant Human PON1 ([TP310356])



PON1 ELISA with 1F7 Capture ([TA600112]) and 2D4 Detection (TA700114) Antibodies. Substrate used: Recombinant Human PON1 ([TP310356])



PON1 Luminex with 2A6 Capture ([TA600113]) and 2D4 Detection (TA700114) Antibodies. Substrate used: Recombinant Human PON1 ([TP310356])



PON1 Luminex with 1F7 Capture ([TA600112]) and 2D4 Detection (TA700114) Antibodies. Substrate used: Recombinant Human PON1 ([TP310356])