

Product datasheet for **TA700113**

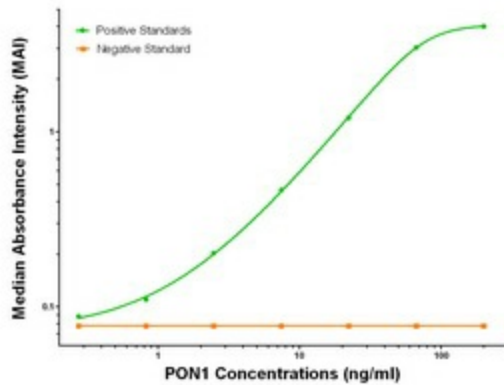
PON1 Biotinylated Mouse Monoclonal Detection Antibody (Biotin conjugated) [Clone ID: OTI1F7]

Product data:

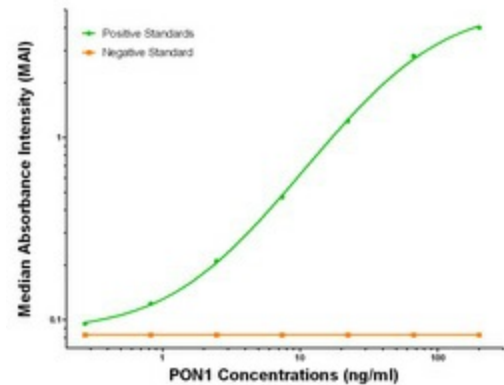
Product Type:	Primary Antibodies
Clone Name:	OTI1F7
Applications:	ELISA, LMNX
Recommended Dilution:	1:250 - 1:1000
Reactivity:	Human
Host:	Mouse
Isotype:	IgG1
Clonality:	Monoclonal
Immunogen:	Full length human recombinant protein of human HPGD (NM_000446) produced in HEK293T cell.
Formulation:	Stored in PBS (pH 7.4) with 0.05% sodium azide, 10mg/ml BSA, 50% glycerol
Concentration:	0.5 mg/ml
Conjugation:	Biotin
Storage:	Store at -20°C as received.
Stability:	Stable for 12 months from date of receipt.
Gene Name:	paraoxonase 1
Database Link:	NP_000437 Entrez Gene 5444 Human P27169
Synonyms:	ESA; MVCD5; PON
Matched ELISA Pair:	TA600113
Protein Families:	Druggable Genome, Secreted Protein
Protein Pathways:	Metabolic pathways

[View online »](#)

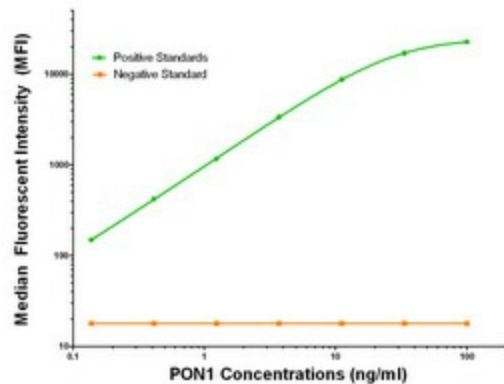
Product images:



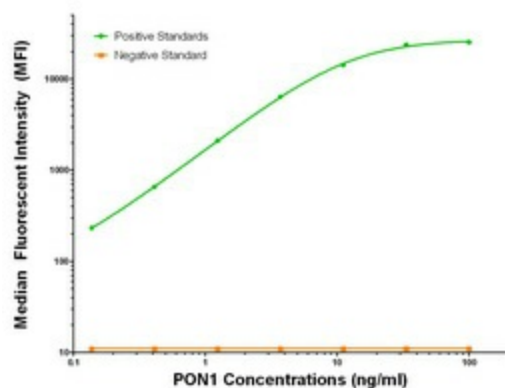
PON1 ELISA with 2D4 Capture ([TA600114]) and 1F7 Detection (TA700113) Antibodies. Substrate used: Recombinant Human PON1 ([TP310356])



PON1 ELISA with 2A6 Capture ([TA600113]) and 1F7 Detection (TA700113) Antibodies. Substrate used: Recombinant Human PON1 ([TP310356])



PON1 Luminex with 2D4 Capture ([TA600114]) and 1F7 Detection (TA700113) Antibodies. Substrate used: Recombinant Human PON1 ([TP310356])



PON1 Luminex with 2A6 Capture ([TA600113])
and 1F7 Detection (TA700113) Antibodies.
Substrate used: Recombinant Human PON1
([TP310356])