

Product datasheet for **TA700100**

Prostaglandin dehydrogenase 1 (HPGD) Biotinylated Mouse Monoclonal Detection Antibody (Biotin conjugated) [Clone ID: OTI1E9]

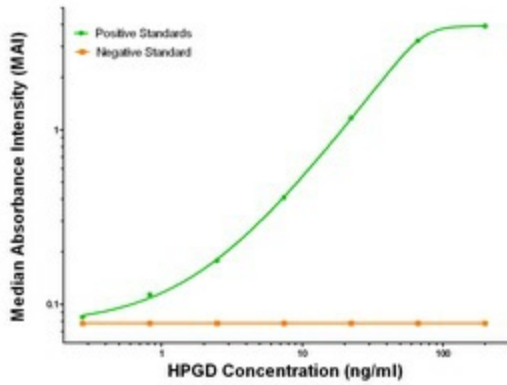
Product data:

Product Type:	Primary Antibodies
Clone Name:	OTI1E9
Applications:	ELISA, LMNX
Recommended Dilution:	1:250 - 1:1000
Reactivity:	Human, Mouse, Rat
Host:	Mouse
Isotype:	IgG1
Clonality:	Monoclonal
Immunogen:	Full length human recombinant protein of human HPGD (NM_000860) produced in HEK293T cell.
Formulation:	Stored in PBS (pH 7.4) with 0.05% sodium azide, 10mg/ml BSA, 50% glycerol
Concentration:	0.5 mg/ml
Conjugation:	Biotin
Storage:	Store at -20°C as received.
Stability:	Stable for 12 months from date of receipt.
Gene Name:	15-hydroxyprostaglandin dehydrogenase
Database Link:	NP_000851 Entrez Gene 3248 Human P15428
Synonyms:	15-PGDH; PGDH; PGDH1; PHOAR1; SDR36C1
Matched ELISA Pair:	TA600101
Protein Families:	Druggable Genome

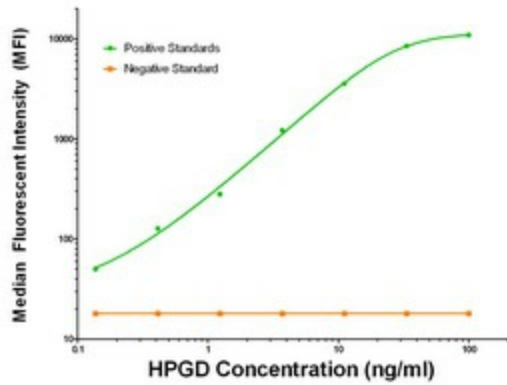


[View online »](#)

Product images:



HPGD ELISA with 2C10 Capture ([TA600101]) and 1E9 Detection (TA700100) Antibodies. Substrate used: Recombinant Human HPGD ([TP304160])



HPGD Luminex with 2C10 Capture ([TA600101]) and 1E9 Detection (TA700100) Antibodies. Substrate used: Recombinant Human HPGD ([TP304160])