

## Product datasheet for **TA700097**

### **FSH beta (FSHB) Biotinylated Mouse Monoclonal Detection Antibody (Biotin conjugated) [Clone ID: OTI4E10]**

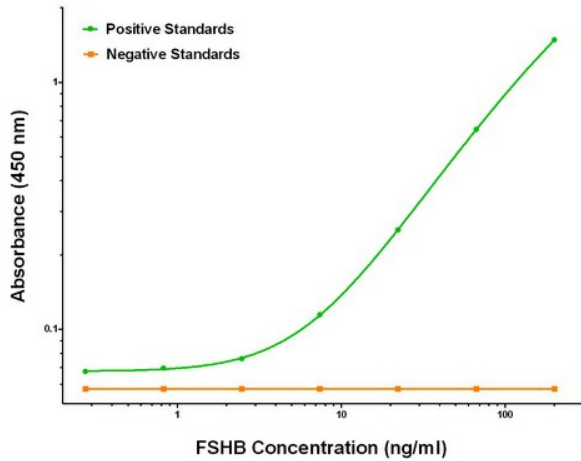
#### **Product data:**

<b>Product Type:</b>	Primary Antibodies
<b>Clone Name:</b>	OTI4E10
<b>Applications:</b>	ELISA, LMNX
<b>Recommended Dilution:</b>	1:250 - 1:1000
<b>Reactivity:</b>	Human, Mouse
<b>Host:</b>	Mouse
<b>Isotype:</b>	IgG1
<b>Clonality:</b>	Monoclonal
<b>Immunogen:</b>	Full length human recombinant protein of human FSHB (NM_000510) produced in HEK293T cell.
<b>Formulation:</b>	Stored in PBS (pH 7.4) with 0.05% sodium azide, 10mg/ml BSA, 50% glycerol
<b>Concentration:</b>	0.5 mg/ml
<b>Conjugation:</b>	Biotin
<b>Storage:</b>	Store at -20°C as received.
<b>Stability:</b>	Stable for 12 months from date of receipt.
<b>Gene Name:</b>	follicle stimulating hormone subunit beta
<b>Database Link:</b>	<a href="#">NP_000501</a> <a href="#">Entrez Gene 2488 Human P01225</a>
<b>Synonyms:</b>	HH24
<b>Matched ELISA Pair:</b>	TA600094
<b>Protein Families:</b>	Druggable Genome, Secreted Protein
<b>Protein Pathways:</b>	GnRH signaling pathway, Neuroactive ligand-receptor interaction

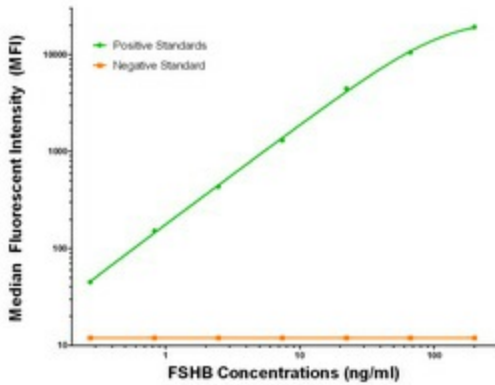


[View online »](#)

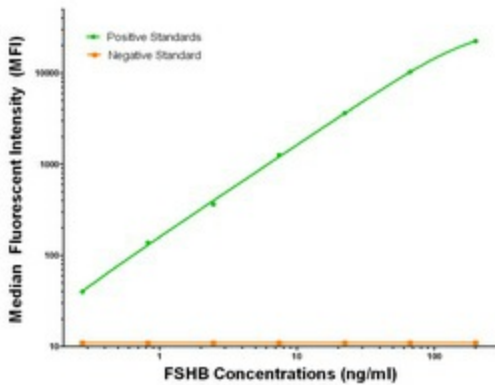
**Product images:**



FSHB ELISA with 1B2 Capture ([TA600094]) and 4E10 Detection (TA700097) Antibodies. Substrate used: Recombinant Human FSHB ([TP322666])



FSHB Luminex with 1B2 Capture ([TA600094]) and 4E10 Detection (TA700097) Antibodies. Substrate used: Recombinant Human FSHB ([TP322666])



FSHB Luminex with 2E5 Capture ([TA600095]) and 4E10 Detection (TA700097) Antibodies. Substrate used: Recombinant Human FSHB ([TP322666])