

Product datasheet for **TA700096**

FSH beta (FSHB) Biotinylated Mouse Monoclonal Detection Antibody (Biotin conjugated) [Clone ID: OTI3A9]

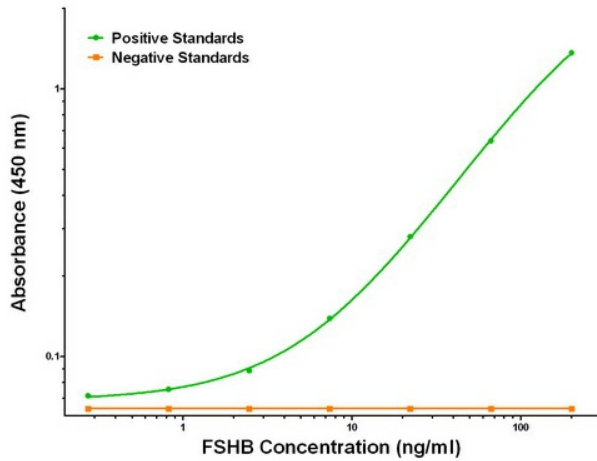
Product data:

| | |
|------------------------------|-------------------------------------------------------------------------------------------|
| Product Type: | Primary Antibodies |
| Clone Name: | OTI3A9 |
| Applications: | ELISA, LMNX |
| Recommended Dilution: | 1:250 - 1:1000 |
| Reactivity: | Human, Mouse |
| Host: | Mouse |
| Isotype: | IgG1 |
| Clonality: | Monoclonal |
| Immunogen: | Full length human recombinant protein of human FSHB (NM_000510) produced in HEK293T cell. |
| Formulation: | Stored in PBS (pH 7.4) with 0.05% sodium azide, 10mg/ml BSA, 50% glycerol |
| Concentration: | 0.5 mg/ml |
| Conjugation: | Biotin |
| Storage: | Store at -20°C as received. |
| Stability: | Stable for 12 months from date of receipt. |
| Gene Name: | follicle stimulating hormone subunit beta |
| Database Link: | NP_000501 Entrez Gene 2488 Human P01225 |
| Synonyms: | HH24 |
| Matched ELISA Pair: | TA600097 |
| Protein Families: | Druggable Genome, Secreted Protein |
| Protein Pathways: | GnRH signaling pathway, Neuroactive ligand-receptor interaction |

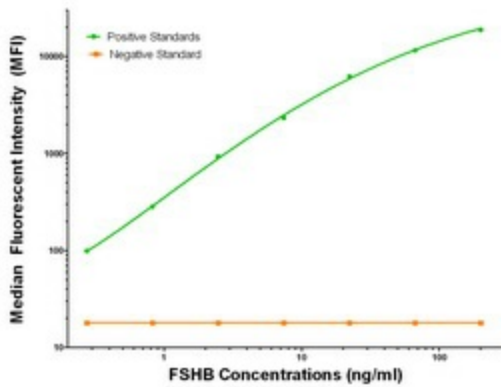


[View online »](#)

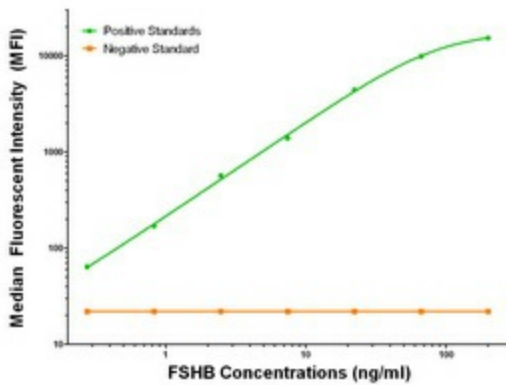
Product images:



FSHB ELISA with 4E8 Capture ([TA600097]) and 3A9 Detection (TA700096) Antibodies. Substrate used: Recombinant Human FSHB ([TP322666])



FSHB Luminex with 4E8 Capture ([TA600097]) and 3A9 Detection (TA700096) Antibodies. Substrate used: Recombinant Human FSHB ([TP322666])



FSHB Luminex with 4E10 Capture ([TA600096]) and 3A9 Detection (TA700096) Antibodies. Substrate used: Recombinant Human FSHB ([TP322666])