

Product datasheet for **TA700095**

FSH beta (FSHB) Biotinylated Mouse Monoclonal Detection Antibody (Biotin conjugated) [Clone ID: OTI2E5]

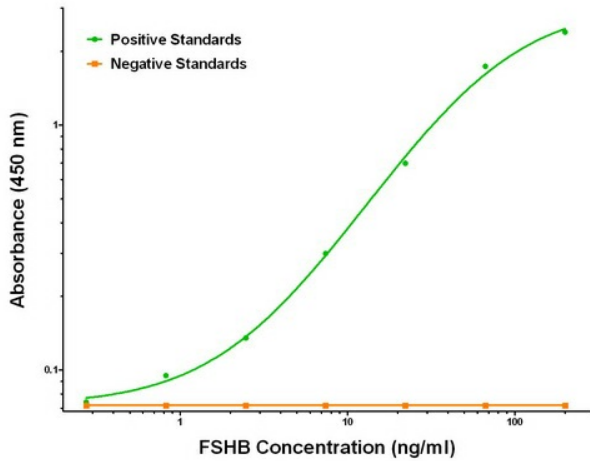
Product data:

Product Type:	Primary Antibodies
Clone Name:	OTI2E5
Applications:	ELISA, LMNX
Recommended Dilution:	1:250 - 1:1000
Reactivity:	Human, Mouse
Host:	Mouse
Isotype:	IgG1
Clonality:	Monoclonal
Immunogen:	Full length human recombinant protein of human FSHB (NM_000510) produced in HEK293T cell.
Formulation:	Stored in PBS (pH 7.4) with 0.05% sodium azide, 10mg/ml BSA, 50% glycerol
Concentration:	0.5 mg/ml
Conjugation:	Biotin
Storage:	Store at -20°C as received.
Stability:	Stable for 12 months from date of receipt.
Gene Name:	follicle stimulating hormone subunit beta
Database Link:	NP_000501 Entrez Gene 2488 Human P01225
Synonyms:	HH24
Matched ELISA Pair:	TA600096
Protein Families:	Druggable Genome, Secreted Protein
Protein Pathways:	GnRH signaling pathway, Neuroactive ligand-receptor interaction

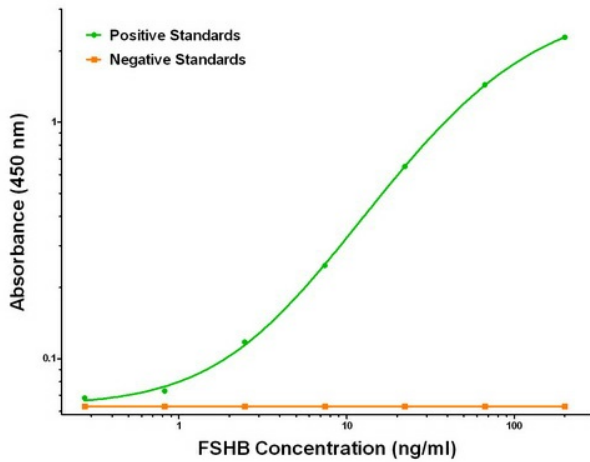


[View online »](#)

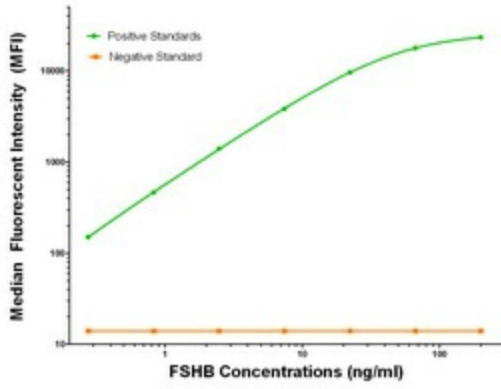
Product images:



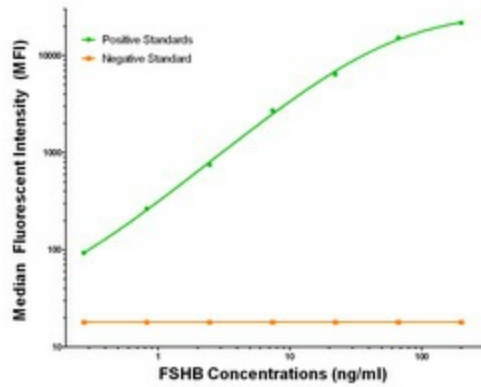
FSHB ELISA with 4E8 Capture ([TA600097]) and 2E5 Detection (TA700095) Antibodies. Substrate used: Recombinant Human FSHB ([TP322666])



FSHB ELISA with 4E10 Capture ([TA600096]) and 2E5 Detection (TA700095) Antibodies. Substrate used: Recombinant Human FSHB ([TP322666])



FSHB Luminex with 4E8 Capture ([TA600097]) and 2E5 Detection (TA700095) Antibodies. Substrate used: Recombinant Human FSHB ([TP322666])



FSHB Luminex with 4E10 Capture ([TA600096]) and 2E5 Detection (TA700095) Antibodies. Substrate used: Recombinant Human FSHB ([TP322666])