

Product datasheet for **TA700082**

Bestrophin 3 (BEST3) Biotinylated Mouse Monoclonal Detection Antibody (Biotin conjugated) [Clone ID: OTI2H3]

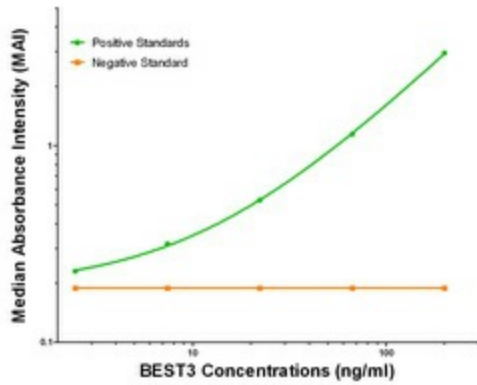
Product data:

Product Type:	Primary Antibodies
Clone Name:	OTI2H3
Applications:	ELISA, LMNX
Recommended Dilution:	1:250 - 1:1000
Reactivity:	Human, Mouse, Rat
Host:	Mouse
Isotype:	IgG1
Clonality:	Monoclonal
Immunogen:	Full length human recombinant protein of human AIPL1 (NP_689652) produced in HEK293T cell.
Formulation:	Stored in PBS (pH 7.4) with 0.05% sodium azide, 10mg/ml BSA, 50% glycerol
Concentration:	0.5 mg/ml
Conjugation:	Biotin
Storage:	Store at -20°C as received.
Stability:	Stable for 12 months from date of receipt.
Gene Name:	bestrophin 3
Database Link:	NP_689652 Entrez Gene 144453 Human Q8N1M1
Synonyms:	VMD2L3
Matched ELISA Pair:	TA600081, TA600082
Protein Families:	Ion Channels: Other, Transmembrane

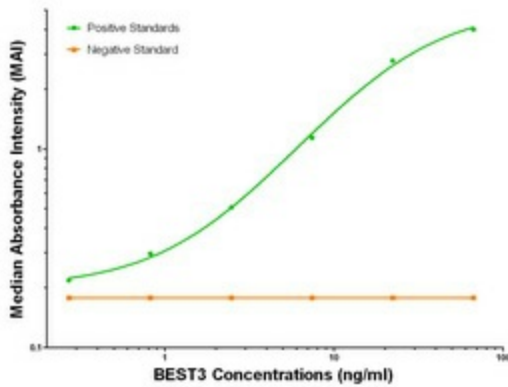


[View online »](#)

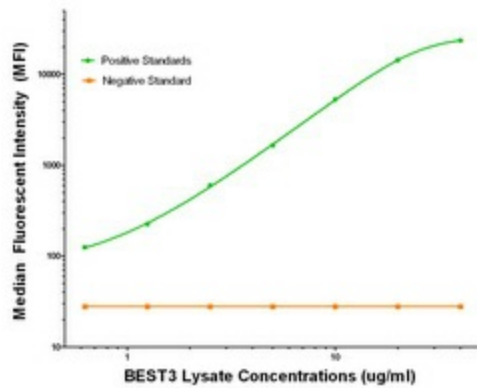
Product images:



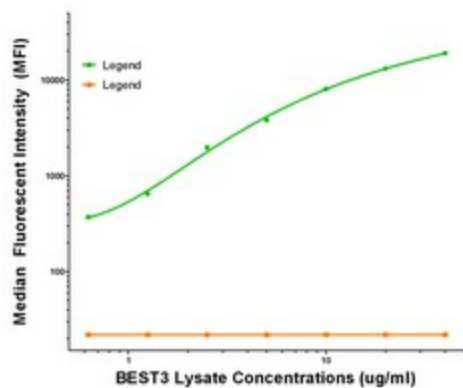
BEST3 ELISA with 1B6 Capture ([TA600081]) and 2H3 Detection (TA700082) Antibodies. Substrate used: Recombinant Human BEST3 ([TP318436])



BEST3 ELISA with 3B11 Capture ([TA600082]) and 2H3 Detection (TA700082) Antibodies. Substrate used: Recombinant Human BEST3 ([TP318436])



BEST3 Luminex with 1B6 Capture ([TA600081]) and 2H3 Detection (TA700082) Antibodies. Substrate used: Recombinant Human BEST3 ([TP318436])



BEST3 Luminex with 3B11 Capture ([TA600082]) and 2H3 Detection (TA700082) Antibodies.
 Substrate used: Recombinant Human BEST3 ([TP318436])