

Product datasheet for TA700072

PKC epsilon (PRKCE) Biotinylated detection Mouse Monoclonal Antibody [Clone ID: OTI2A12]

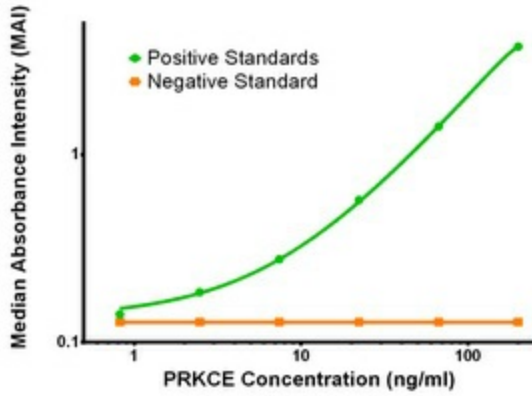
Product data:

Product Type:	Primary Antibodies
Clone Name:	OTI2A12
Applications:	ELISA, LMNX
Recommended Dilution:	1:250 - 1:1000
Reactivity:	Human, Mouse, Rat
Host:	Mouse
Isotype:	IgG1
Clonality:	Monoclonal
Immunogen:	Full length human recombinant protein of human PRKCE (NP_005391) produced in HEK293T cel
Formulation:	Stored in PBS (pH 7.4) with 0.05% sodium azide, 10mg/ml BSA, 50% glycerol
Concentration:	0.5 mg/ml
Storage:	Store at -20°C as received.
Stability:	Stable for 12 months from date of receipt.
Gene Name:	protein kinase C epsilon
Database Link:	NP_005391 Entrez Gene 18754 MouseEntrez Gene 29340 RatEntrez Gene 5581 Human
Synonyms:	nPKC-epsilon; PKCE
Matched ELISA Pair:	TA600071
Protein Families:	Druggable Genome, Protein Kinase
Protein Pathways:	Fc epsilon RI signaling pathway, Fc gamma R-mediated phagocytosis, Tight junction, Type II diabetes mellitus, Vascular smooth muscle contraction

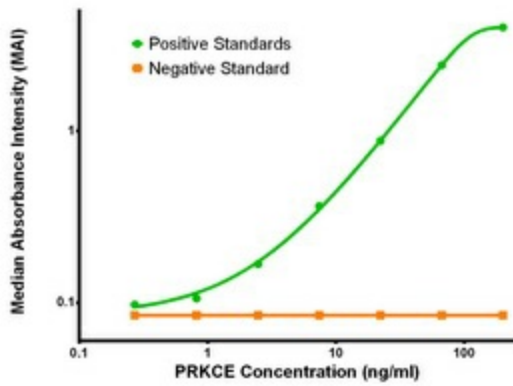


[View online »](#)

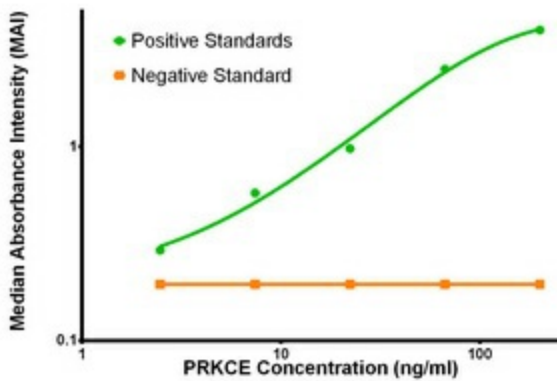
Product images:



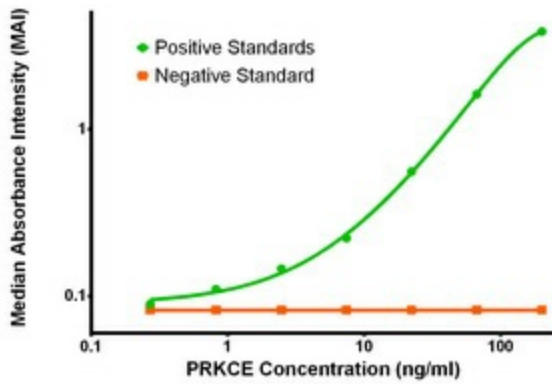
PRKCE ELISA with 4G8 Capture ([TA600076]) and 2A12 Detection (TA700072) Antibodies. Substrate used: Recombinant Human PRKCE ([TP317702])



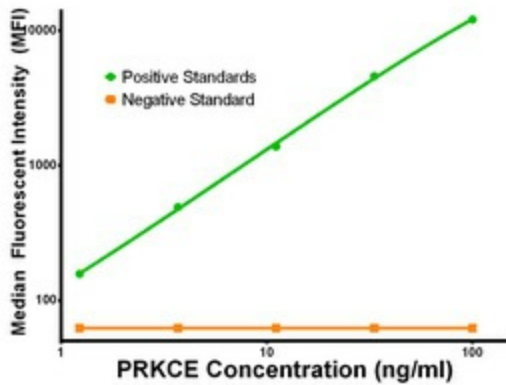
PRKCE ELISA with 1G5 Capture ([TA600072]) and 2A12 Detection (TA700072) Antibodies. Substrate used: Recombinant Human PRKCE ([TP317702])



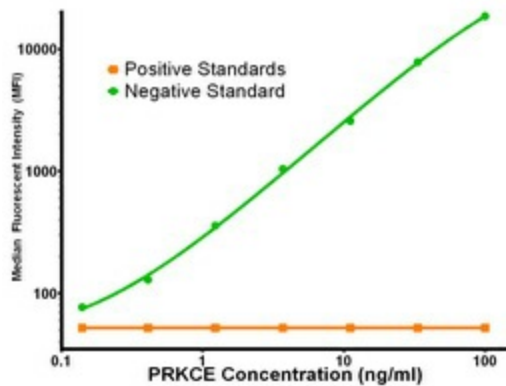
PRKCE ELISA with 3F10 Capture ([TA600074]) and 2A12 Detection (TA700072) Antibodies. Substrate used: Recombinant Human PRKCE ([TP317702])



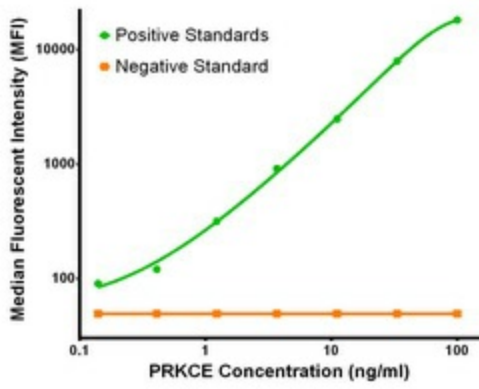
PRKCE ELISA with 1B7 Capture ([TA600071]) and 2A12 Detection (TA700072) Antibodies. Substrate used: Recombinant Human PRKCE ([TP317702])



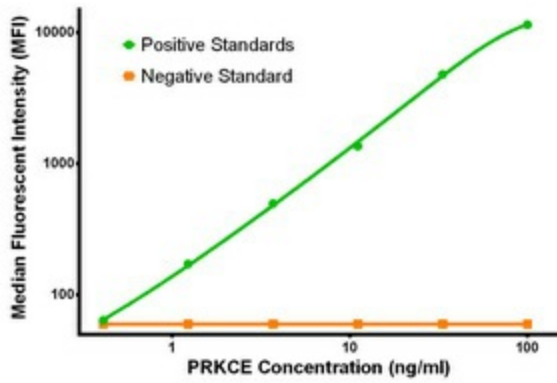
PRKCE Luminex with 4G8 Capture ([TA600076]) and 2A12 Detection (TA700072) Antibodies. Substrate used: Recombinant Human PRKCE ([TP317702])



PRKCE Luminex with 1G5 Capture ([TA600072]) and 2A12 Detection (TA700072) Antibodies. Substrate used: Recombinant Human PRKCE ([TP317702])



PRKCE Luminex with 3F10 Capture ([TA600074]) and 2A12 Detection (TA700072) Antibodies. Substrate used: Recombinant Human PRKCE ([TP317702])



PRKCE Luminex with 1B7 Capture ([TA600071]) and 2A12 Detection (TA700072) Antibodies. Substrate used: Recombinant Human PRKCE ([TP317702])