

## Product datasheet for **TA700071**

### **PKC epsilon (PRKCE) Biotinylated Mouse Monoclonal Detection Antibody (Biotin conjugated) [Clone ID: OTI1B7]**

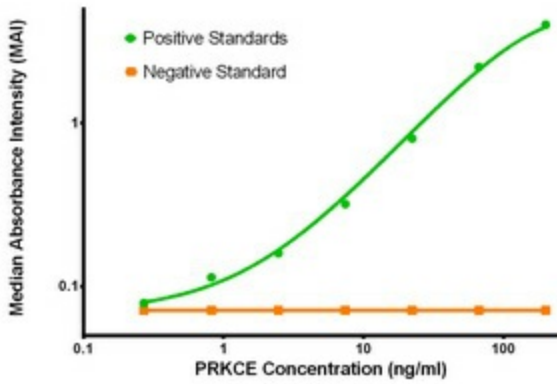
#### **Product data:**

Product Type:	Primary Antibodies
Clone Name:	OTI1B7
Applications:	ELISA, LMNX
Recommended Dilution:	1:250 - 1:1000
Reactivity:	Human, Mouse, Rat
Host:	Mouse
Isotype:	IgG1
Clonality:	Monoclonal
Immunogen:	Full length human recombinant protein of human PRKCE (NP_005391) produced in HEK293T cel
Formulation:	Stored in PBS (pH 7.4) with 0.05% sodium azide, 10mg/ml BSA, 50% glycerol
Concentration:	0.5 mg/ml
Conjugation:	Biotin
Storage:	Store at -20°C as received.
Stability:	Stable for 12 months from date of receipt.
Gene Name:	protein kinase C epsilon
Database Link:	<a href="#">NP_005391</a> <a href="#">Entrez Gene 18754 Mouse</a> <a href="#">Entrez Gene 29340 Rat</a> <a href="#">Entrez Gene 5581 Human</a> <a href="#">Q02156</a>
Synonyms:	nPKC-epsilon; PKCE
Matched ELISA Pair:	TA600072
Protein Families:	Druggable Genome, Protein Kinase
Protein Pathways:	Fc epsilon RI signaling pathway, Fc gamma R-mediated phagocytosis, Tight junction, Type II diabetes mellitus, Vascular smooth muscle contraction

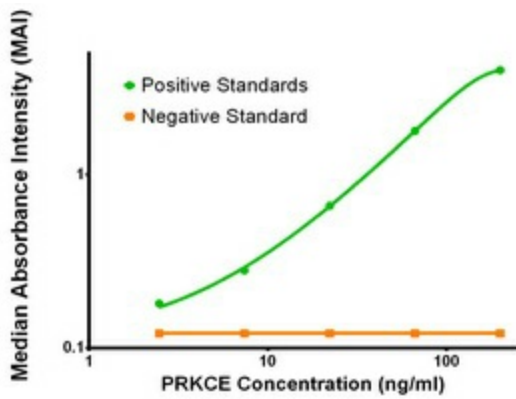


[View online »](#)

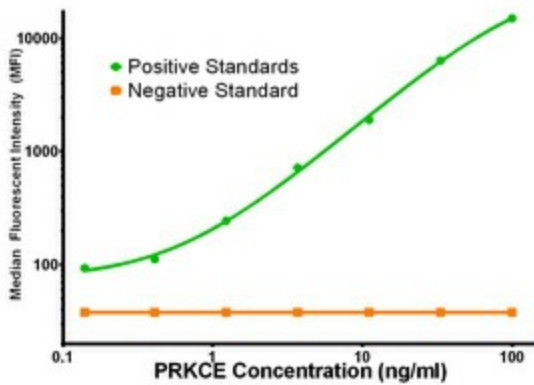
**Product images:**



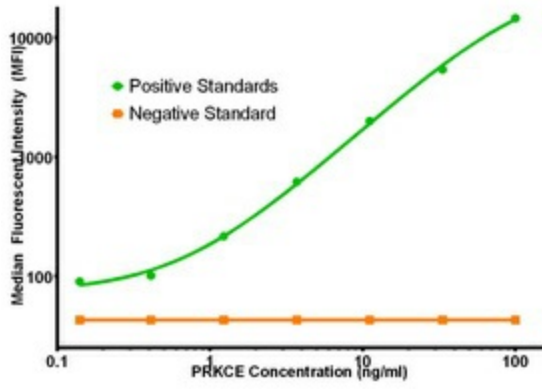
PRKCE ELISA with 1G5 Capture ([TA600072]) and 1B7 Detection (TA700071) Antibodies. Substrate used: Recombinant Human PRKCE ([TP317702])



PRKCE ELISA with 3F10 Capture ([TA600074]) and 1B7 Detection (TA700071) Antibodies. Substrate used: Recombinant Human PRKCE ([TP317702])



PRKCE Luminex with 1G5 Capture ([TA600072]) and 1B7 Detection (TA700071) Antibodies. Substrate used: Recombinant Human PRKCE ([TP317702])



PRKCE Luminex with 3F10 Capture ([TA600074]) and 1B7 Detection (TA700071) Antibodies.  
 Substrate used: Recombinant Human PRKCE ([TP317702])