

Product datasheet for **TA700063**

ERK2 (MAPK1) Biotinylated detection Mouse Monoclonal Antibody [Clone ID: OTI6F8]

Product data:

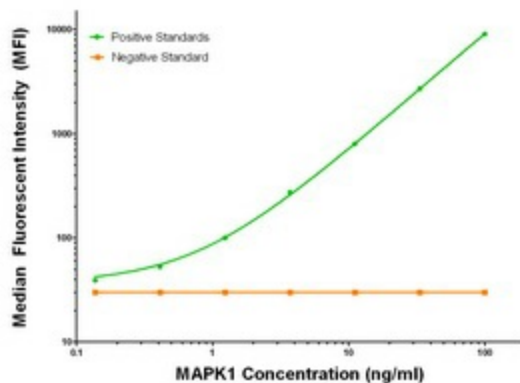
Product Type:	Primary Antibodies
Clone Name:	OTI6F8
Applications:	LMNX
Recommend Dilution:	1:250 - 1:1000
Reactivity:	Human
Host:	Mouse
Isotype:	IgG1
Clonality:	Monoclonal
Immunogen:	Full length human recombinant protein of human MAPK1 (NM_138957) produced in HEK293T cell.
Formulation:	Stored in PBS (pH 7.4) with 0.05% sodium azide, 10mg/ml BSA, 50% glycerol
Concentration:	0.5 mg/ml
Storage:	Store at -20°C as received.
Stability:	Stable for 12 months from date of receipt.
Gene Name:	mitogen-activated protein kinase 1
Database Link:	NP_620407 Entrez Gene 5594 Human
Synonyms:	ERK; ERK-2; ERK2; ERT1; MAPK2; p38; p40; p41; p41 mapk; p42-MAPK; P42MAPK; PRKM1; PRKM2
Matched ELISA Pair:	TA600064
Protein Families:	Druggable Genome, Protein Kinase



[View online »](#)

Protein Pathways:

Acute myeloid leukemia, Adherens junction, Alzheimer's disease, Axon guidance, B cell receptor signaling pathway, Bladder cancer, Chemokine signaling pathway, Chronic myeloid leukemia, Colorectal cancer, Dorso-ventral axis formation, Endometrial cancer, ErbB signaling pathway, Fc epsilon RI signaling pathway, Fc gamma R-mediated phagocytosis, Focal adhesion, Gap junction, Glioma, GnRH signaling pathway, Insulin signaling pathway, Long-term depression, Long-term potentiation, MAPK signaling pathway, Melanogenesis, Melanoma, mTOR signaling pathway, Natural killer cell mediated cytotoxicity, Neurotrophin signaling pathway, NOD-like receptor signaling pathway, Non-small cell lung cancer, Oocyte meiosis, Pancreatic cancer, Pathways in cancer, Prion diseases, Progesterone-mediated oocyte maturation, Prostate cancer, Regulation of actin cytoskeleton, Renal cell carcinoma, T cell receptor signaling pathway, TGF-beta signaling pathway, Thyroid cancer, Toll-like receptor signaling pathway, Type II diabetes mellitus, Vascular smooth muscle contraction, VEGF signaling pathway

Product images:

MAPK1 Luminex with 7C9 Capture ([TA600064]) and 6F8 Detection (TA700063) Antibodies.
Substrate used: Recombinant Human MAPK1 ([TP304703])