

Product datasheet for **TA700057**

LEPRE1 (P3H1) Biotinylated Mouse Monoclonal Detection Antibody (Biotin conjugated) **[Clone ID: OTI1B4]**

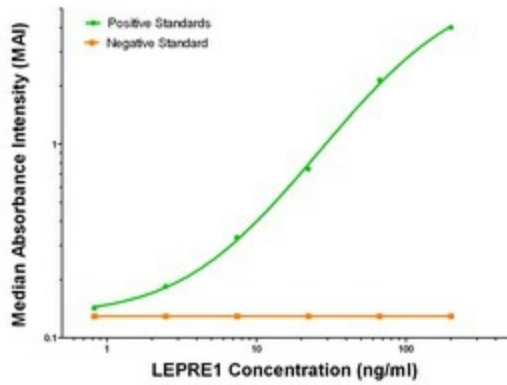
Product data:

Product Type:	Primary Antibodies
Clone Name:	OTI1B4
Applications:	ELISA, LMNX
Recommended Dilution:	1:250 - 1:1000
Reactivity:	Human
Host:	Mouse
Isotype:	IgG1
Clonality:	Monoclonal
Immunogen:	Full length human recombinant protein of human LEPRE1 (NM_022356) produced in HEK293T cell.
Formulation:	Stored in PBS (pH 7.4) with 0.05% sodium azide, 10mg/ml BSA, 50% glycerol
Concentration:	0.5 mg/ml
Conjugation:	Biotin
Storage:	Store at -20°C as received.
Stability:	Stable for 12 months from date of receipt.
Gene Name:	prolyl 3-hydroxylase 1
Database Link:	NP_071751 Entrez Gene 64175 Human Q32P28
Synonyms:	GROS1; LEPRE1; OI8
Matched ELISA Pair:	TA600056
Protein Families:	Secreted Protein

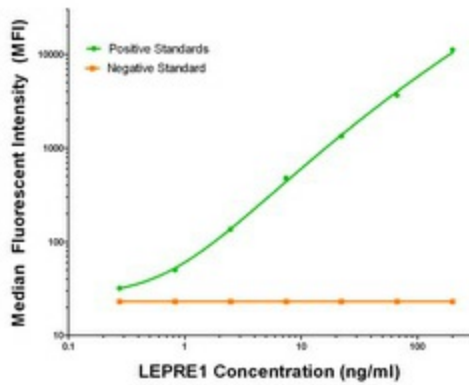


[View online »](#)

Product images:



LEPRE1 ELISA with 1A1 Capture ([TA600056]) and 1B4 Detection (TA700057) Antibodies. Substrate used: Recombinant Human LEPRE1 ([TP322535])



LEPRE1 Luminex with 1A1 Capture ([TA600056]) and 1B4 Detection (TA700057) Antibodies. Substrate used: Recombinant Human LEPRE1 ([TP322535])