

## Product datasheet for **TA700055**

### **AKT1 Biotinylated Mouse Monoclonal Detection Antibody (Biotin conjugated) [Clone ID: OTI4C11]**

#### Product data:

Product Type:	Primary Antibodies
Clone Name:	OTI4C11
Applications:	ELISA, LMNX
Recommended Dilution:	1:250 - 1:1000
Reactivity:	Human, Mouse, Rat
Host:	Mouse
Isotype:	IgG1
Clonality:	Monoclonal
Immunogen:	Full length human recombinant protein of human AKT1 (NM_005163) produced in HEK293T cell.
Formulation:	Stored in PBS (pH 7.4) with 0.05% sodium azide, 10mg/ml BSA, 50% glycerol
Concentration:	0.5 mg/ml
Conjugation:	Biotin
Storage:	Store at -20°C as received.
Stability:	Stable for 12 months from date of receipt.
Gene Name:	AKT serine/threonine kinase 1
Database Link:	<a href="#">NP_005154</a> <a href="#">Entrez Gene 11651 MouseEntrez Gene 24185 RatEntrez Gene 207 Human P31749</a>
Synonyms:	AKT; CWS6; PKB; PKB-ALPHA; PRKBA; RAC; RAC-ALPHA
Matched ELISA Pair:	TA600055
Protein Families:	Druggable Genome, ES Cell Differentiation/IPS, Protein Kinase



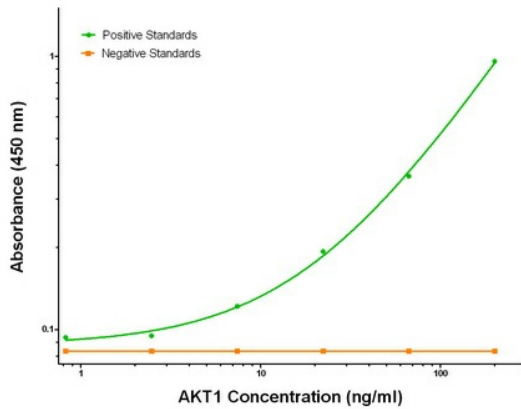
[View online »](#)

**Protein Pathways:**

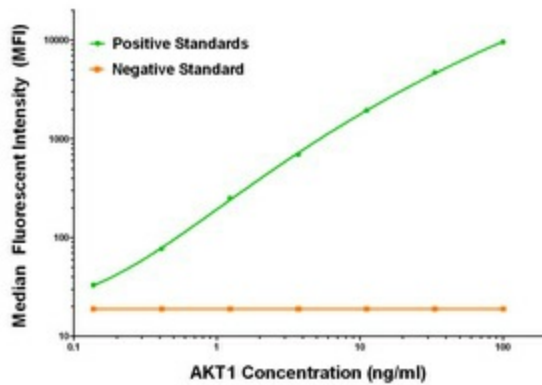
Acute myeloid leukemia, Adipocytokine signaling pathway, Apoptosis, B cell receptor signaling pathway, Chemokine signaling pathway, Chronic myeloid leukemia, Colorectal cancer, Endometrial cancer, ErbB signaling pathway, Fc epsilon RI signaling pathway, Fc gamma R-mediated phagocytosis, Focal adhesion, Glioma, Insulin signaling pathway, Jak-STAT signaling pathway, MAPK signaling pathway, Melanoma, mTOR signaling pathway, Neurotrophin signaling pathway, Non-small cell lung cancer, Pancreatic cancer, Pathways in cancer, Progesterone-mediated oocyte maturation, Prostate cancer, Renal cell carcinoma, Small cell lung cancer, T cell receptor signaling pathway, Tight junction, Toll-like receptor signaling pathway, VEGF signaling pathway

**Product images:**

AKT1 ELISA with 2B9 Capture (TA600055) and 4C11 Detection (TA700055) Antibodies



AKT1 ELISA with 2B9 Capture ([TA600055]) and 4C11 Detection (TA700055) Antibodies. Substrate used: Recombinant Human AKT1 ([TP320257])



AKT1 Luminex with 2B9 Capture ([TA600055]) and 4C11 Detection (TA700055) Antibodies. Substrate used: Recombinant Human AKT1 ([TP320257])