

Product datasheet for **TA700052**

Aminoacylase 1 (ACY1) Biotinylated Mouse Monoclonal Detection Antibody (Biotin conjugated) [Clone ID: OTI2B5]

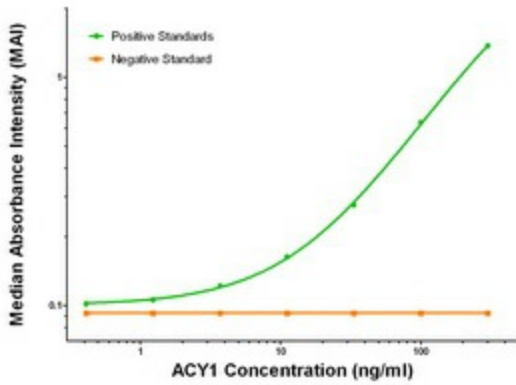
Product data:

Product Type:	Primary Antibodies
Clone Name:	OTI2B5
Applications:	ELISA, LMNX
Recommended Dilution:	1:250 - 1:1000
Reactivity:	Human, Mouse, Rat
Host:	Mouse
Isotype:	IgG1
Clonality:	Monoclonal
Immunogen:	Full length human recombinant protein of human ACY1 (NP_000657) produced in HEK293T cell.
Formulation:	Stored in PBS (pH 7.4) with 0.05% sodium azide, 10mg/ml BSA, 50% glycerol
Concentration:	0.5 mg/ml
Conjugation:	Biotin
Storage:	Store at -20°C as received.
Stability:	Stable for 12 months from date of receipt.
Gene Name:	aminoacylase 1
Database Link:	NP_000657 Entrez Gene 109652 MouseEntrez Gene 300981 RatEntrez Gene 95 Human Q03154
Synonyms:	ACY-1; ACY1D; HEL-S-5
Matched ELISA Pair:	TA600052
Protein Families:	Protease
Protein Pathways:	Arginine and proline metabolism, Metabolic pathways

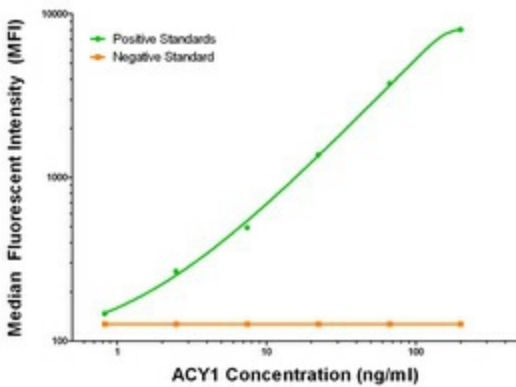


[View online »](#)

Product images:



ACY1 ELISA with 1E5 Capture ([TA600052]) and 2B5 Detection (TA700052) Antibodies. Substrate used: Recombinant Human ACY1 ([TP301284])



ACY1 Luminex with 1E5 Capture ([TA600052]) and 2B5 Detection (TA700052) Antibodies. Substrate used: Recombinant Human ACY1 ([TP301284])