

Product datasheet for **TA700035**

beta Catenin (CTNNB1) Biotinylated Mouse Monoclonal Detection Antibody (Biotin conjugated) [Clone ID: OTI6E7]

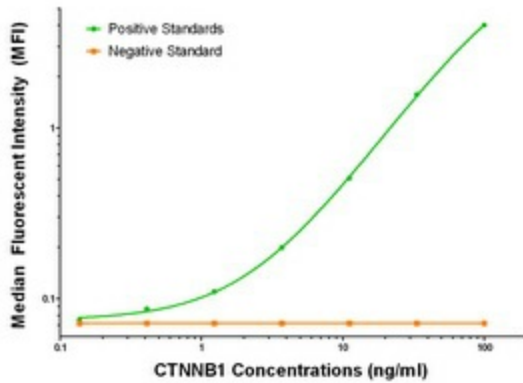
Product data:

Product Type:	Primary Antibodies
Clone Name:	OTI6E7
Applications:	ELISA, LMNX
Recommended Dilution:	1:250 - 1:1000
Reactivity:	Human, Mouse, Rat
Host:	Mouse
Isotype:	IgG2a
Clonality:	Monoclonal
Immunogen:	Full length human recombinant protein of human CTNNB1 (NP_001895) produced in HEK293T cell.
Formulation:	Stored in PBS (pH 7.4) with 0.05% sodium azide, 10mg/ml BSA, 50% glycerol
Concentration:	0.5 mg/ml
Conjugation:	Biotin
Storage:	Store at -20°C as received.
Stability:	Stable for 12 months from date of receipt.
Gene Name:	catenin beta 1
Database Link:	NP_001895 Entrez Gene 12387 MouseEntrez Gene 84353 RatEntrez Gene 1499 Human P35222
Synonyms:	armadillo; CTNNB; MRD19
Matched ELISA Pair:	TA600035, TA600047, TA600141
Protein Families:	Druggable Genome, ES Cell Differentiation/IPS, Transcription Factors
Protein Pathways:	Adherens junction, Arrhythmogenic right ventricular cardiomyopathy (ARVC), Basal cell carcinoma, Colorectal cancer, Endometrial cancer, Focal adhesion, Leukocyte transendothelial migration, Melanogenesis, Pathogenic Escherichia coli infection, Pathways in cancer, Prostate cancer, Thyroid cancer, Tight junction, Wnt signaling pathway

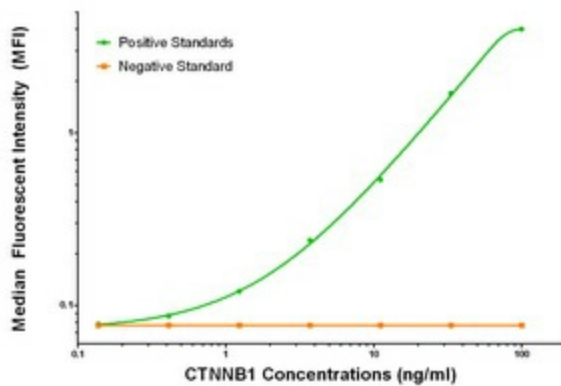


[View online »](#)

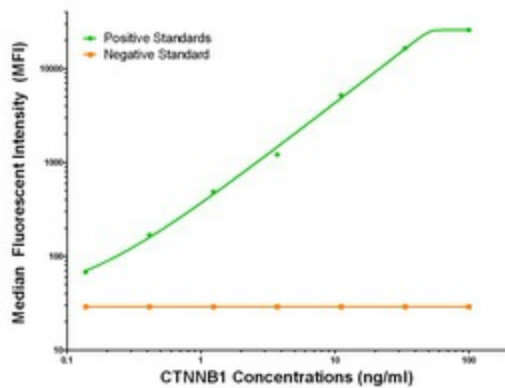
Product images:



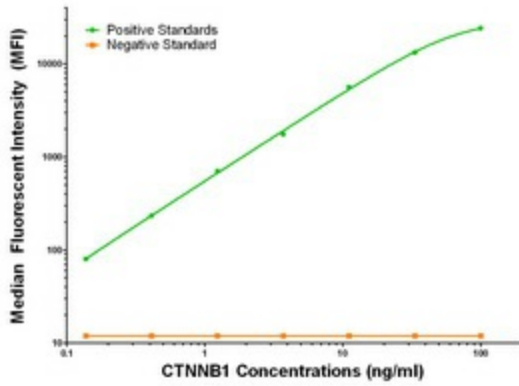
CTNNB1 ELISA with 1B11 Capture ([TA600141]) and 6E7 Detection (TA700035) Antibodies. Substrate used: Recombinant Human CTNNB1 ([TP308947])



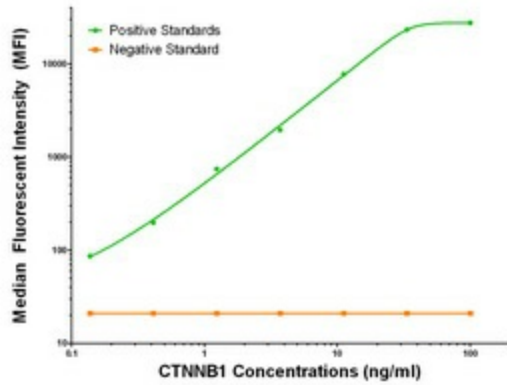
CTNNB1 ELISA with 2H3 Capture ([TA600035]) and 6E7 Detection (TA700035) Antibodies. Substrate used: Recombinant Human CTNNB1 ([TP308947])



CTNNB1 Luminex with 9F6 Capture ([TA600034]) and 6E7 Detection (TA700035) Antibodies. Substrate used: Recombinant Human CTNNB1 ([TP308947])



CTNNB1 Luminex with 1B11 Capture ([TA600141]) and 6E7 Detection (TA700035) Antibodies. Substrate used: Recombinant Human CTNNB1 ([TP308947])



CTNNB1 Luminex with 2H3 Capture ([TA600035]) and 6E7 Detection (TA700035) Antibodies. Substrate used: Recombinant Human CTNNB1 ([TP308947])