

## Product datasheet for **TA700031**

### CD36 Biotinylated Mouse Monoclonal Detection Antibody (Biotin conjugated) [Clone ID: OTI4H7]

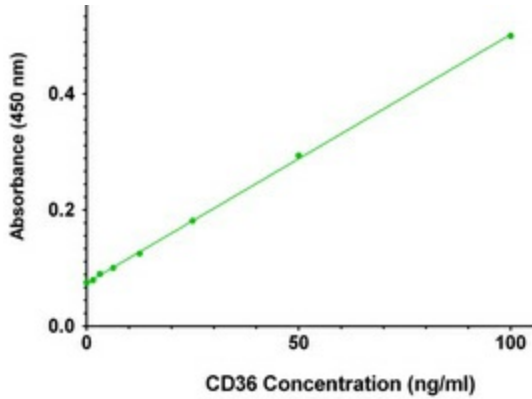
#### Product data:

Product Type:	Primary Antibodies
Clone Name:	OTI4H7
Applications:	ELISA
Recommended Dilution:	ELISA 1:250-1:1000
Reactivity:	Human, Rat
Host:	Mouse
Isotype:	IgG1
Clonality:	Monoclonal
Immunogen:	Full length human recombinant protein of human CD36 (NP_000063) produced in HEK293T cell.
Formulation:	Stored in PBS (pH 7.4) with 0.05% sodium azide, 10mg/ml BSA, 50% glycerol
Concentration:	0.5 mg/ml
Conjugation:	Biotin
Storage:	Store at -20°C as received.
Stability:	Stable for 12 months from date of receipt.
Gene Name:	CD36 molecule
Database Link:	<a href="#">NP_000063</a> <a href="#">Entrez Gene 29184 Rat</a> <a href="#">Entrez Gene 948 Human</a> <a href="#">P16671</a>
Synonyms:	BDPLT10; CHDS7; FAT; GP3B; GP4; GPIV; PASIV; SCARB3
Matched ELISA Pair:	TA600031, TA600044
Protein Families:	Druggable Genome, Transmembrane
Protein Pathways:	Adipocytokine signaling pathway, ECM-receptor interaction, Hematopoietic cell lineage, PPAR signaling pathway

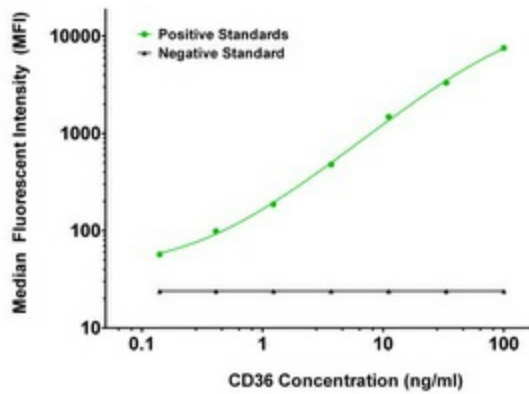


[View online »](#)

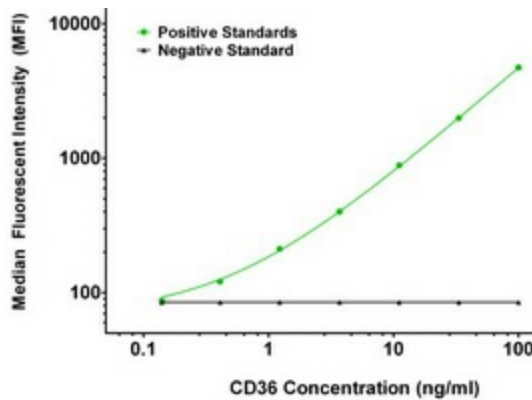
**Product images:**



CD36 ELISA with 3F4 Capture ([TA600031]) and 4H7 Detection (TA700031) Antibodies. Substrate used: Recombinant Human CD36 ([TP303254])



CD36 Luminex ELISA with 3F4 Capture ([TA600031]) and 4H7 Detection (TA700031) Antibodies. Substrate used: Recombinant Human CD36 ([TP303254])



CD36 Luminex ELISA with 6A5 Capture ([TA600044]) and 4H7 Detection (TA700031) Antibodies. Substrate used: Recombinant Human CD36 ([TP303254])