

Product datasheet for **TA700029**

LOX Biotinylated Mouse Monoclonal Detection Antibody (Biotin conjugated) [Clone ID: OTI9A11]

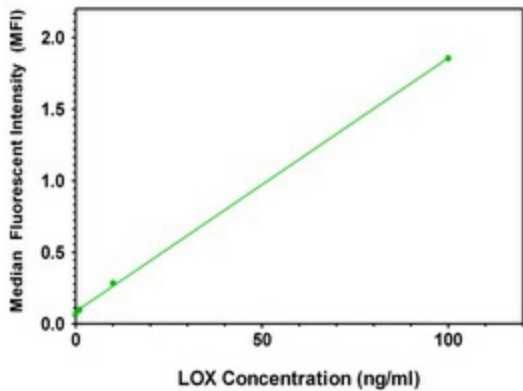
Product data:

Product Type:	Primary Antibodies
Clone Name:	OTI9A11
Applications:	ELISA, LMNX
Recommended Dilution:	1:250 - 1:1000
Reactivity:	Human, Mouse, Rat
Host:	Mouse
Isotype:	IgG1
Clonality:	Monoclonal
Immunogen:	Human recombinant protein fragment corresponding to amino acids 22-168 of human LOX (NP_002308) produced in HEK293T cell.
Formulation:	Stored in PBS (pH 7.4) with 0.05% sodium azide, 10mg/ml BSA, 50% glycerol
Concentration:	0.5 mg/ml
Conjugation:	Biotin
Storage:	Store at -20°C as received.
Stability:	Stable for 12 months from date of receipt.
Gene Name:	lysyl oxidase
Database Link:	NP_002308 Entrez Gene 16948 Mouse Entrez Gene 24914 Rat Entrez Gene 4015 Human P28300
Synonyms:	MGC105112
Matched ELISA Pair:	TA600029, TA600043
Protein Families:	Druggable Genome, Secreted Protein

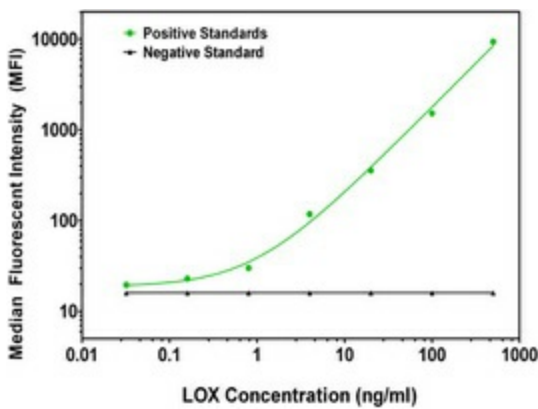


[View online »](#)

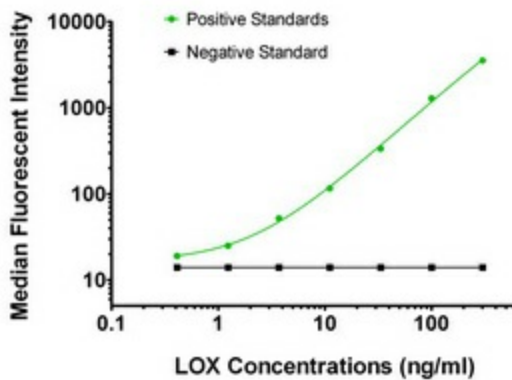
Product images:



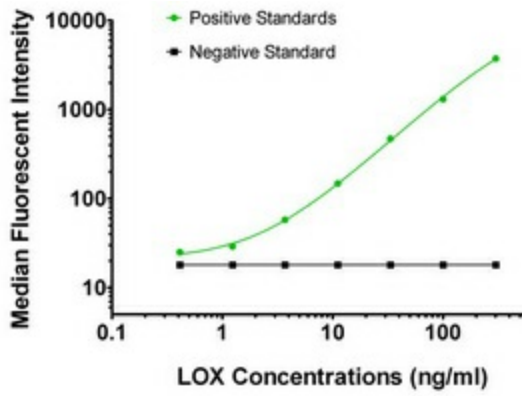
LOX ELISA with 3C3 Capture ([TA600029]) and 9A11 Detection (TA700029) Antibodies. Substrate used: Recombinant Human LOX ([TP313323])



SELE Luminex ELISA with CL-37 Capture ([TA600028]) and CL2 Detection ([TA700028]) Antibodies. Substrate used: Recombinant Human SELE ([TP321153])



LOX Luminex ELISA with 3C3 Capture ([TA600029]) and 9A11 Detection (TA700029) Antibodies. Substrate used: Recombinant Human LOX ([TP313323])



LOX Luminex ELISA with 9B5 Capture ([TA600043]) and 9A11 Detection (TA700029) Antibodies. Substrate used: Recombinant Human LOX ([TP313323])