

Product datasheet for **TA700028**

CD62E (SELE) Biotinylated Mouse Monoclonal Detection Antibody (Biotin conjugated) [Clone ID: CL2]

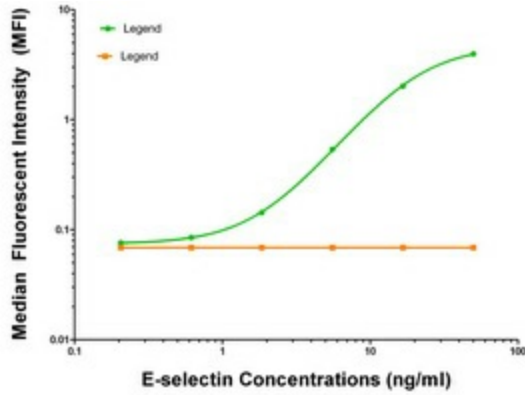
Product data:

Product Type:	Primary Antibodies
Clone Name:	CL2
Applications:	ELISA
Recommended Dilution:	ELISA 1:250-1:1000
Reactivity:	Human
Host:	Mouse
Isotype:	IgG1
Clonality:	Monoclonal
Immunogen:	Purified recombinant protein of human SELE produced in E. coli cell.
Formulation:	Stored in PBS (pH 7.4) with 0.05% sodium azide, 10mg/ml BSA, 50% glycerol
Concentration:	0.5 mg/ml
Conjugation:	Biotin
Storage:	Store at -20°C as received.
Stability:	Stable for 12 months from date of receipt.
Gene Name:	selectin E
Database Link:	NP_000441 Entrez Gene 6401 Human P16581
Synonyms:	CD62E; ELAM; ELAM1; ESEL; LECAM2
Matched ELISA Pair:	TA600028
Protein Families:	Druggable Genome, Transmembrane
Protein Pathways:	Cell adhesion molecules (CAMs)

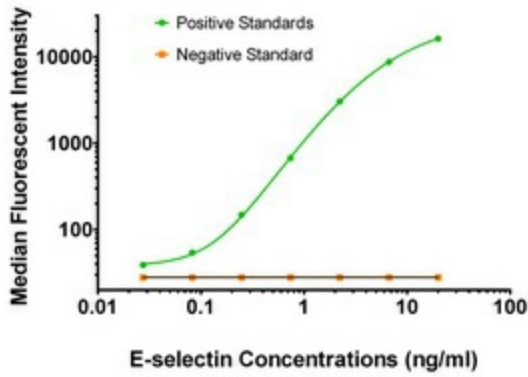


[View online »](#)

Product images:



SELE ELISA with CL-37 Capture ([TA600028]) and CL2 Detection (TA700028) Antibodies. Substrate used: Recombinant Human SELE ([TP321153])



SELE Luminex ELISA with CL-37 Capture ([TA600028]) and CL2 Detection (TA700028) Antibodies. Substrate used: Recombinant Human SELE ([TP321153])