

Product datasheet for **TA700027**

CD40L (CD40LG) Biotinylated Mouse Monoclonal Detection Antibody (Biotin conjugated) **[Clone ID: MK13A4]**

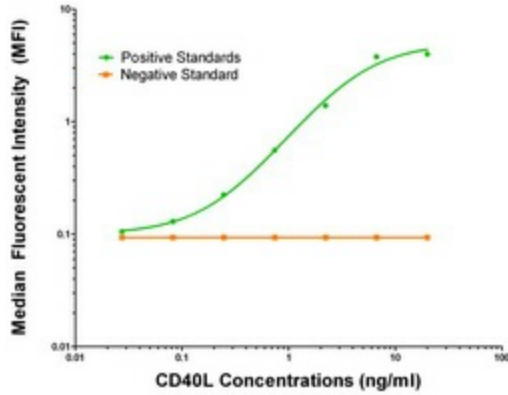
Product data:

Product Type:	Primary Antibodies
Clone Name:	MK13A4
Applications:	ELISA
Recommended Dilution:	ELISA 1:250-1:1000
Reactivity:	Human
Host:	Mouse
Isotype:	IgG1
Clonality:	Monoclonal
Immunogen:	Purified recombinant protein of human CD40L produced in E. coli.
Formulation:	Stored in PBS (pH 7.4) with 0.05% sodium azide, 10mg/ml BSA, 50% glycerol
Concentration:	0.5 mg/ml
Conjugation:	Biotin
Storage:	Store at -20°C as received.
Stability:	Stable for 12 months from date of receipt.
Gene Name:	CD40 ligand
Database Link:	NP_000065 Entrez Gene 959 Human P29965
Synonyms:	CD40L; CD154; gp39; hCD40L; HIGM1; IGM; IMD3; T-BAM; TNFSF5; TRAP
Matched ELISA Pair:	TA600027
Protein Families:	Druggable Genome, Secreted Protein, Transmembrane
Protein Pathways:	Allograft rejection, Asthma, Autoimmune thyroid disease, Cell adhesion molecules (CAMs), Cytokine-cytokine receptor interaction, Primary immunodeficiency, Systemic lupus erythematosus, T cell receptor signaling pathway, Viral myocarditis

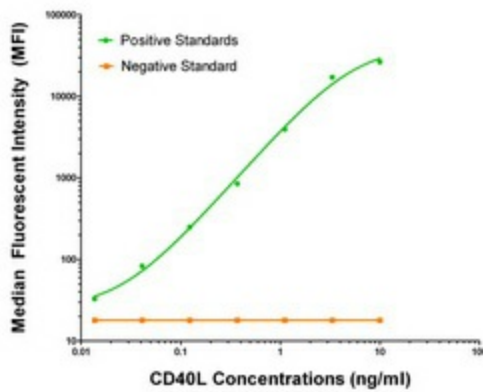


[View online »](#)

Product images:



CD40L ELISA with MK13A4 Capture ([TA600027]) and MK13A4 Detection (TA700027) Antibodies. Substrate used: Recombinant Human CD40L (E. Coli expressed Peptide)



CD40L Luminex ELISA with MK13A4 Capture ([TA600027]) and MK13A4 Detection (TA700027) Antibodies. Substrate used: Recombinant Human CD40L (E. Coli expressed Peptide)