

Product datasheet for **TA700025**

MCP1 (CCL2) Biotinylated Mouse Monoclonal Detection Antibody (Biotin conjugated) [Clone ID: OTI2H5]

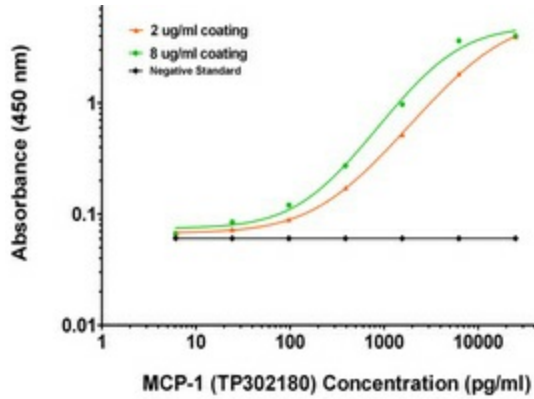
Product data:

Product Type:	Primary Antibodies
Clone Name:	OTI2H5
Applications:	ELISA
Recommended Dilution:	ELISA 1:250-1:1000
Reactivity:	Human
Host:	Mouse
Isotype:	IgG2a
Clonality:	Monoclonal
Immunogen:	Purified recombinant protein of human MCP-1 (NP_002973) produced in HEK293T cell.
Formulation:	Stored in PBS (pH 7.4) with 0.05% sodium azide, 10mg/ml BSA, 50% glycerol
Concentration:	0.5 mg/ml
Conjugation:	Biotin
Storage:	Store at -20°C as received.
Stability:	Stable for 12 months from date of receipt.
Gene Name:	C-C motif chemokine ligand 2
Database Link:	NP_002973 Entrez Gene 6347 Human P13500
Synonyms:	GDGF-2; HC11; HSMCR30; MCAF; MCP-1; MCP1; SCYA2; SMC-CF
Matched ELISA Pair:	TA600025
Protein Families:	Druggable Genome, Secreted Protein
Protein Pathways:	Chemokine signaling pathway, Cytokine-cytokine receptor interaction, NOD-like receptor signaling pathway

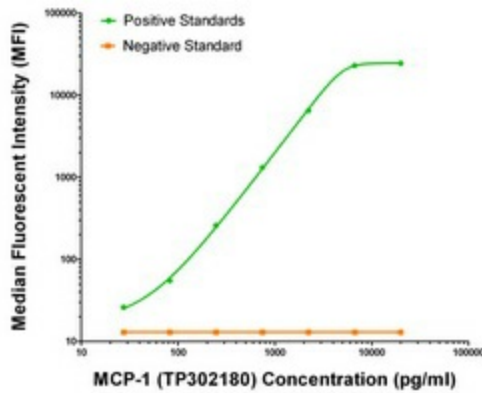


[View online »](#)

Product images:



MCP-1 ELISA with 5D3 Capture ([TA600025]) and 2H5 Detection (TA700025) Antibodies. Substrate used: Recombinant Human MCP-1 (E. Coli expressed Peptide)



MCP-1 Luminex ELISA with 5D3 Capture ([TA600025]) and 2H5 Detection (TA700025) Antibodies. Substrate used: Recombinant Human MCP-1 (E. Coli expressed Peptide)