

Product datasheet for **TA700015**

IL17 (IL17A) Biotinylated Mouse Monoclonal Detection Antibody (Biotin conjugated) [Clone ID: OTI4D17]

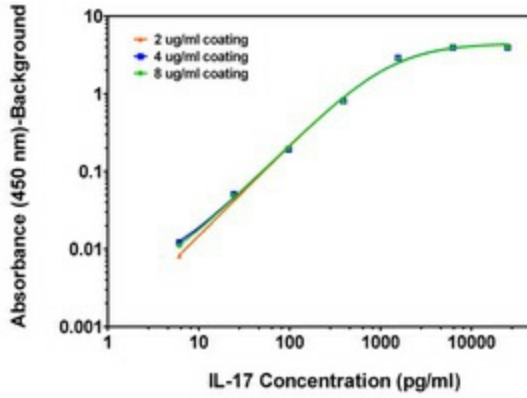
Product data:

| | |
|-----------------------|---|
| Product Type: | Primary Antibodies |
| Clone Name: | OTI4D17 |
| Applications: | ELISA |
| Recommended Dilution: | ELISA 1:250-1:1000 |
| Reactivity: | Human |
| Host: | Mouse |
| Isotype: | IgG1 |
| Clonality: | Monoclonal |
| Immunogen: | Full length human recombinant protein of human IL-17 produced in E. coli cell. |
| Formulation: | Stored in PBS (pH 7.4) with 0.05% sodium azide, 10mg/ml BSA, 50% glycerol |
| Concentration: | 0.5 mg/ml |
| Conjugation: | Biotin |
| Storage: | Store at -20°C as received. |
| Stability: | Stable for 12 months from date of receipt. |
| Gene Name: | interleukin 17A |
| Database Link: | NP_002181 Entrez Gene 3605 Human Q16552 |
| Synonyms: | CTLA8; IL-17; IL-17A; IL17 |
| Matched ELISA Pair: | TA600015 |
| Protein Families: | Druggable Genome, Secreted Protein |
| Protein Pathways: | Cytokine-cytokine receptor interaction |

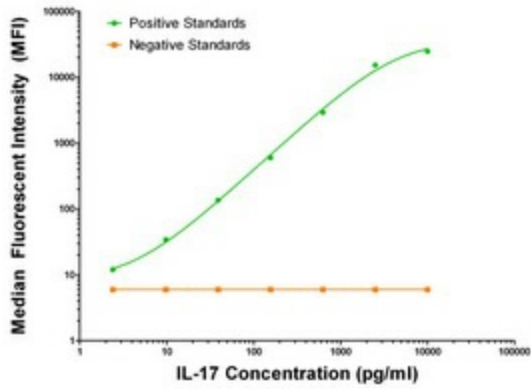


[View online »](#)

Product images:



IL-17 ELISA with 4C17 Capture ([TA600015]) and 4D17 Detection (TA700015) Antibodies. Substrate used: Recombinant Human IL-17 (E. Coli expressed Peptide)



IL-17 Luminex ELISA with 4C17 Capture ([TA600015]) and 4D17 Detection (TA700015) Antibodies. Substrate used: Recombinant Human IL-17 (E. Coli expressed Peptide)