

## Product datasheet for **TA700014**

### alpha 1 Fetoprotein (AFP) Biotinylated Mouse Monoclonal Detection Antibody (Biotin conjugated) [Clone ID: OTI1E8]

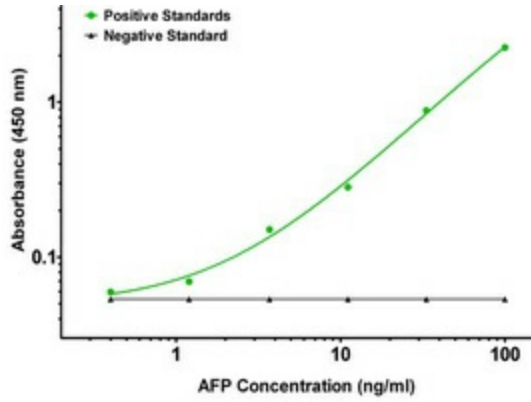
#### Product data:

Product Type:	Primary Antibodies
Clone Name:	OTI1E8
Applications:	ELISA
Recommended Dilution:	1:250 - 1:1000
Reactivity:	Human
Host:	Mouse
Isotype:	IgG1
Clonality:	Monoclonal
Immunogen:	Full length human recombinant protein of human AFP (NP_001125) produced in HEK293T cell.
Formulation:	Stored in PBS (pH 7.4) with 0.05% sodium azide, 10mg/ml BSA, 50% glycerol
Concentration:	0.5 mg/ml
Conjugation:	Biotin
Storage:	Store at -20°C as received.
Stability:	Stable for 12 months from date of receipt.
Gene Name:	alpha fetoprotein
Database Link:	<a href="#">NP_001125</a> <a href="#">Entrez Gene 174 Human</a> <a href="#">P02771</a>
Synonyms:	AFPD; FETA; HPAFP
Matched ELISA Pair:	TA600014
Protein Families:	Druggable Genome, Secreted Protein



[View online »](#)

Product images:



AFP ELISA with 2E2 Capture ([TA600014]) and 1E8 Detection (TA700014) Antibodies. Substrate used: Recombinant Human AFP ([TP306622])