

Product datasheet for **TA700011**

B Raf (BRAF) Biotinylated Mouse Monoclonal Detection Antibody (Biotin conjugated) [Clone ID: OTI3A7]

Product data:

Product Type:	Primary Antibodies
Clone Name:	OTI3A7
Applications:	ELISA, LMNX
Recommended Dilution:	1:250 - 1:1000
Reactivity:	Human, Mouse, Rat
Host:	Mouse
Isotype:	IgG2a
Clonality:	Monoclonal
Immunogen:	Protein expressed in 293T cell transfected with human BRAF expression vector
Formulation:	Stored in PBS (pH 7.4) with 0.05% sodium azide, 10mg/ml BSA, 50% glycerol
Concentration:	0.5 mg/ml
Conjugation:	Biotin
Storage:	Store at -20°C as received.
Stability:	Stable for 12 months from date of receipt.
Gene Name:	B-Raf proto-oncogene, serine/threonine kinase
Database Link:	NP_004324 Entrez Gene 109880 MouseEntrez Gene 114486 RatEntrez Gene 673 Human P15056
Synonyms:	B-raf; B-RAF1; BRAF1; NS7; RAFB1
Matched ELISA Pair:	TA600011
Protein Families:	Druggable Genome, Protein Kinase

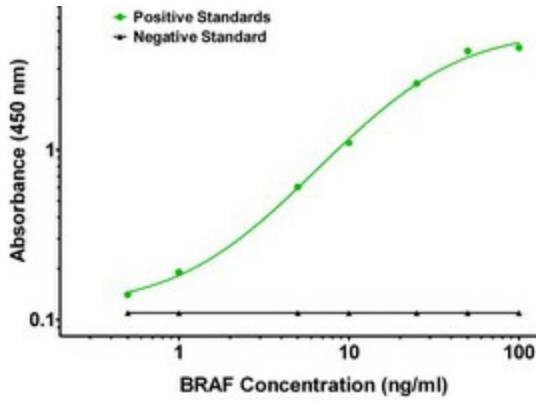


[View online »](#)

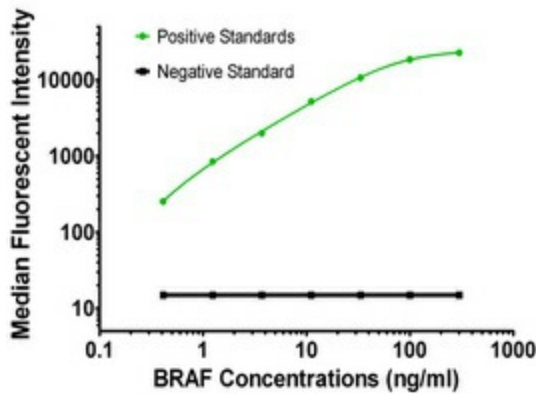
Protein Pathways:

Acute myeloid leukemia, Bladder cancer, Chemokine signaling pathway, Chronic myeloid leukemia, Colorectal cancer, Endometrial cancer, ErbB signaling pathway, Focal adhesion, Glioma, Insulin signaling pathway, Long-term depression, Long-term potentiation, MAPK signaling pathway, Melanoma, mTOR signaling pathway, Natural killer cell mediated cytotoxicity, Neurotrophin signaling pathway, Non-small cell lung cancer, Pancreatic cancer, Pathways in cancer, Progesterone-mediated oocyte maturation, Prostate cancer, Regulation of actin cytoskeleton, Renal cell carcinoma, Thyroid cancer, Vascular smooth muscle contraction

Product images:



BRAF ELISA with 4C11 Capture ([TA600011]) and 3A7 Detection (TA700011) Antibodies. Substrate used: Recombinant Human BRAF ([TP311013])



BRAF Luminex ELISA with 4C11 Capture ([TA600011]) and 3A7 Detection (TA700011) Antibodies. Substrate used: Recombinant Human BRAF ([TP311013])