

Product datasheet for **TA700008**

LDHA Biotinylated Mouse Monoclonal Detection Antibody (Biotin conjugated) [Clone ID: OTI2B11]

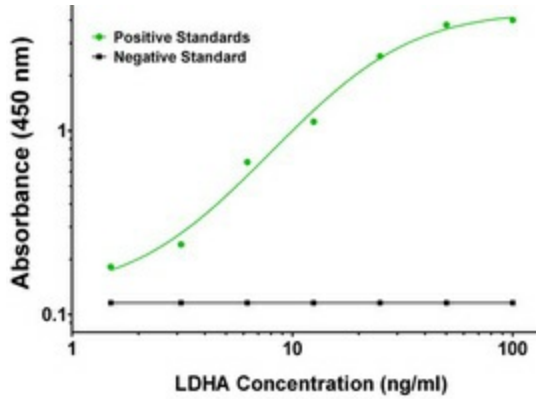
Product data:

Product Type:	Primary Antibodies
Clone Name:	OTI2B11
Applications:	ELISA, LMNX
Recommended Dilution:	1:250 - 1:1000
Reactivity:	Human, Mouse
Host:	Mouse
Isotype:	IgG1
Clonality:	Monoclonal
Immunogen:	Protein expressed in 293T cell transfected with human LDHA expression vector
Formulation:	Stored in PBS (pH 7.4) with 0.05% sodium azide, 10mg/ml BSA, 50% glycerol
Concentration:	0.5 mg/ml
Conjugation:	Biotin
Storage:	Store at -20°C as received.
Stability:	Stable for 12 months from date of receipt.
Gene Name:	lactate dehydrogenase A
Database Link:	NP_005557 Entrez Gene 16828 Mouse Entrez Gene 3939 Human P00338
Synonyms:	GSD11; HEL-S-133P; LDHM; PIG19
Matched ELISA Pair:	TA600008
Protein Families:	Druggable Genome
Protein Pathways:	Cysteine and methionine metabolism, Glycolysis / Gluconeogenesis, Metabolic pathways, Propanoate metabolism, Pyruvate metabolism

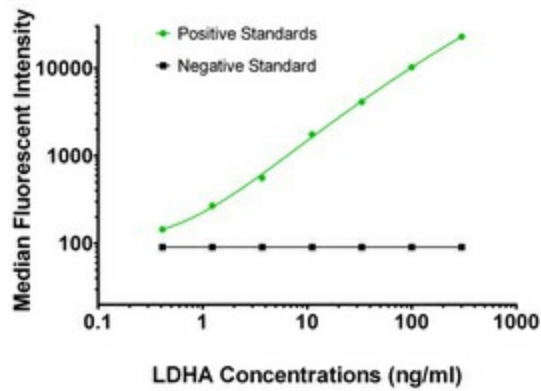


[View online »](#)

Product images:



LDHA ELISA with 5G10 Capture ([TA600008]) and 2B11 Detection (TA700008) Antibodies. Substrate used: Recombinant Human LDHA ([TP309378])



LDHA Luminex ELISA with 5G10 Capture ([TA600008]) and 2B11 Detection (TA700008) Antibodies. Substrate used: Recombinant Human LDHA ([TP309378])