

Product datasheet for **TA700007**

alpha 1 Antitrypsin (SERPINA1) Biotinylated Mouse Monoclonal Detection Antibody (Biotin conjugated) [Clone ID: OTI5B12]

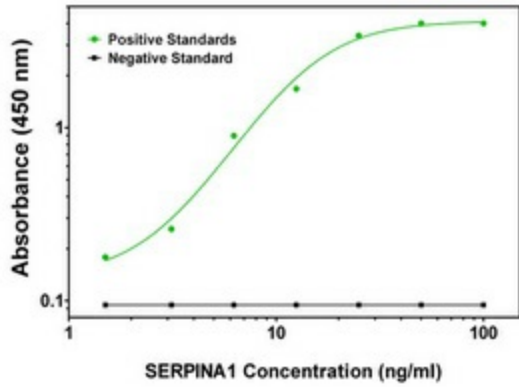
Product data:

| | |
|-----------------------|--|
| Product Type: | Primary Antibodies |
| Clone Name: | OTI5B12 |
| Applications: | ELISA, LMNX |
| Recommended Dilution: | 1:250 - 1:1000 |
| Reactivity: | Human |
| Host: | Mouse |
| Isotype: | IgG1 |
| Clonality: | Monoclonal |
| Immunogen: | Protein expressed in 293T cell transfected with human SERPINA1 expression vector |
| Formulation: | Stored in PBS (pH 7.4) with 0.05% sodium azide, 10mg/ml BSA, 50% glycerol |
| Concentration: | 0.5 mg/ml |
| Conjugation: | Biotin |
| Storage: | Store at -20°C as received. |
| Stability: | Stable for 12 months from date of receipt. |
| Gene Name: | serpin family A member 1 |
| Database Link: | NP_000286 Entrez Gene 5265 Human P01009 |
| Synonyms: | A1A; A1AT; AAT; alpha1AT; PI; PI1; PRO2275 |
| Matched ELISA Pair: | TA600007 |
| Protein Families: | Druggable Genome, ES Cell Differentiation/IPS, Secreted Protein |
| Protein Pathways: | Complement and coagulation cascades |

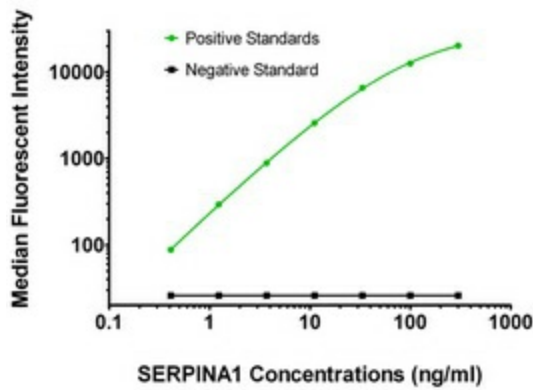


[View online »](#)

Product images:



SERPINA1 ELISA with 11G2 Capture ([TA600007]) and 5B12 Detection (TA700007) Antibodies. Substrate used: Recombinant Human SERPINA1 ([TP302082])



SERPINA1 Luminex ELISA with 11G2 Capture ([TA600007]) and 5B12 Detection (TA700007) Antibodies. Substrate used: Recombinant Human SERPINA1 ([TP302082])