

Product datasheet for **TA600580**

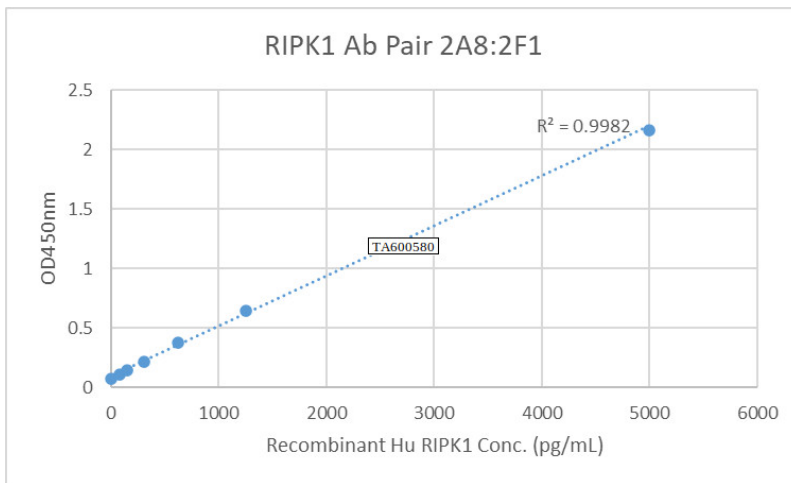
RIP (RIPK1) Mouse Monoclonal Capture Antibody [Clone ID: OTI2A8]

Product data:

Product Type:	Primary Antibodies
Clone Name:	OTI2A8
Applications:	ELISA
Reactivity:	Human, Dog
Host:	Mouse
Isotype:	IgG1
Clonality:	Monoclonal
Immunogen:	Recombinant protein (133-422aa)
Formulation:	PBS (pH 7.4) containing 0.05% sodium azide and up to 5% trehalose.
Concentration:	0.5mg/ml
Purification:	Purified from mouse ascites fluids by affinity chromatography (protein A/G)
Conjugation:	Unconjugated
Storage:	Shipped at -20°C or with ice packs, Upon delivery store at -20°C. Dilute in PBS(pH7.3) if necessary. Stable for 12 months from date of receipt. Avoid repeated freeze-thaws.
Predicted Protein Size:	75.8 kDa
Gene Name:	receptor interacting serine/threonine kinase 1
Database Link:	NP_003795 Entrez Gene 102152063 Dog Entrez Gene 8737 Human Q13546
Background:	This gene encodes a member of the receptor-interacting protein (RIP) family of serine/threonine protein kinases. The encoded protein plays a role in inflammation and cell death in response to tissue damage, pathogen recognition, and as part of developmental regulation. RIPK1/RIPK3 kinase-mediated necrosis is referred to as necroptosis. Genetic disruption of this gene in mice results in death shortly after birth.



Synonyms:	AIEFL; IMD57; RIP; RIP-1; RIPI
Matched ELISA Pair:	TA700580
Protein Families:	Druggable Genome, Protein Kinase
Protein Pathways:	Apoptosis, Cytosolic DNA-sensing pathway, RIG-I-like receptor signaling pathway, Toll-like receptor signaling pathway

Product images:

RIPK1 ELISA with 2A8 Capture (TA600580) and 2F1 Detection ([TA700580]) Antibodies. Target protein used: Recombinant Human RIPK1 (E. coli expressed protein Cat# [TP760433])