

Product datasheet for **TA600579**

Tau (MAPT) Rabbit Monoclonal Capture Antibody [Clone ID: OTIR1B1]

Product data:

| | |
|-------------------------|--|
| Product Type: | Primary Antibodies |
| Clone Name: | OTIR1B1 |
| Applications: | ELISA |
| Recommended Dilution: | ELISA 1:10000-1:100000 |
| Reactivity: | Human |
| Host: | Rabbit |
| Isotype: | IgG |
| Clonality: | Monoclonal |
| Immunogen: | Full length human recombinant protein of human Tau (NP_005901) produced in E.coli. |
| Formulation: | PBS (PH 7.3) containing 0.05% sodium azide. |
| Concentration: | 0.5mg/ml |
| Purification: | Purified from mouse ascites fluids or tissue culture supernatant by affinity chromatography (protein A/G) |
| Conjugation: | Unconjugated |
| Storage: | Shipped at -20°C or with ice packs, Upon delivery store at -20°C. Dilute in PBS(pH7.3) if necessary. Stable for 12 months from date of receipt. Avoid repeated freeze-thaws. |
| Stability: | Stable for 12 months from date to receipt. |
| Predicted Protein Size: | 45.7 kDa |
| Gene Name: | microtubule associated protein tau |
| Database Link: | NP_005901 Entrez Gene 4137 Human P10636 |

[View online »](#)

Background: This gene encodes the microtubule-associated protein tau (MAPT) whose transcript undergoes complex, regulated alternative splicing, giving rise to several mRNA species. MAPT transcripts are differentially expressed in the nervous system, depending on stage of neuronal maturation and neuron type. MAPT gene mutations have been associated with several neurodegenerative disorders such as Alzheimer's disease, Pick's disease, frontotemporal dementia, cortico-basal degeneration and progressive supranuclear palsy. [provided by RefSeq, Jul 2008]

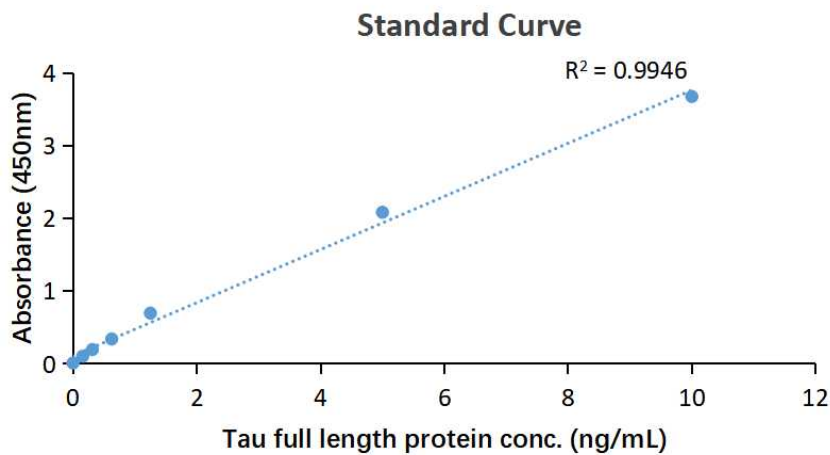
Synonyms: DDPAC; FTDP-17; MAPTL; MSTD; MTBT1; MTBT2; PPND; PPP1R103; TAU; tau-40

Matched ELISA Pair: TA700579

Protein Families: Druggable Genome

Protein Pathways: Alzheimer's disease, MAPK signaling pathway

Product images:



Tau ELISA with 1B1 Capture (TA600579) and 5B1 Detection ([TA700579]) Antibodies. Substrate used: Tau full length protein