

Product datasheet for **TA600562**

BNP (NPPB) Rabbit Monoclonal Capture Antibody [Clone ID: OTIR5G8]

Product data:

Product Type:	Primary Antibodies
Clone Name:	OTIR5G8
Applications:	ELISA, LMNX
Reactivity:	Human
Host:	Rabbit
Isotype:	IgG
Clonality:	Monoclonal
Immunogen:	Synthetic peptide (the amino acid sequence is considered to be commercially sensitive) within Human BNP. The exact sequence is proprietary.
Formulation:	PBS (pH7.3) containing 0.05% sodium azide
Concentration:	0.5 mg/ml
Purification:	Purified from mouse ascites fluids or tissue culture supernatant by affinity chromatography (protein A/G)
Conjugation:	Unconjugated
Storage:	Store at -20°C. Avoid repeat freeze/thaw cycles.
Predicted Protein Size:	14.7 kDa
Gene Name:	natriuretic peptide B
Database Link:	NP_002512 Entrez Gene 4879 Human P16860



[View online »](#)

Background:

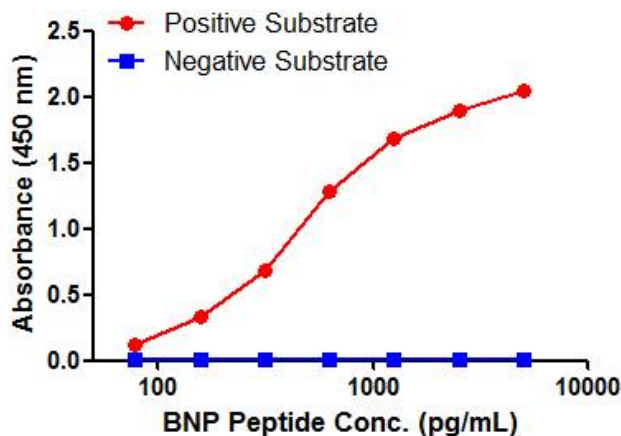
This gene is a member of the natriuretic peptide family and encodes a secreted protein which functions as a cardiac hormone. The protein undergoes two cleavage events, one within the cell and a second after secretion into the blood. The protein's biological actions include natriuresis, diuresis, vasorelaxation, inhibition of renin and aldosterone secretion, and a key role in cardiovascular homeostasis. A high concentration of this protein in the bloodstream is indicative of heart failure. The presence of myocardial injury is a significant predictor of mortality in hospitalized coronavirus disease 2019 (COVID-19) patients, and there is evidence of increased levels of natriuretic peptide B in hospitalized non-survivor COVID-19 patients. The protein also acts as an antimicrobial peptide with antibacterial and antifungal activity. Mutations in this gene have been associated with postmenopausal osteoporosis. [provided by RefSeq, Aug 2020]

Synonyms:

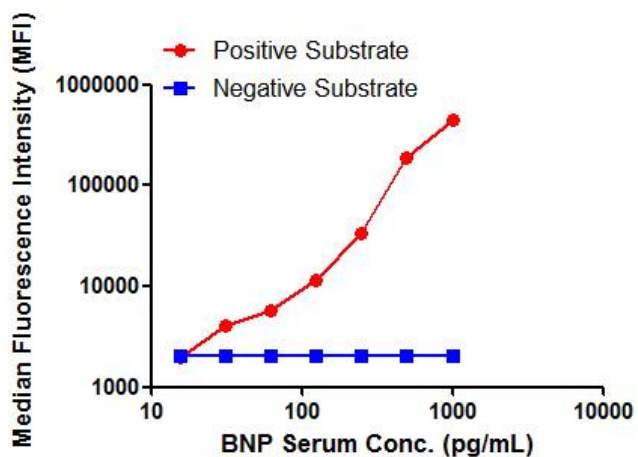
BNP; Iso-ANP

Protein Families:

Druggable Genome, Secreted Protein, Stem cell - Pluripotency

Product images:

BNP ELISA with 5G8 Capture (TA600562) and 5D11 Detection ([TA700562]) Antibodies.
Substrate used: Synthetic peptide with disulfide bond



BNP Luminex ELISA with 5G8 Capture (TA600562) and 5D11 Detection ([TA700562]) Antibodies.
Substrate used: BNP plasma