

Product datasheet for **TA600559**

GFAP Mouse Monoclonal Capture Antibody [Clone ID: OTI4G7]

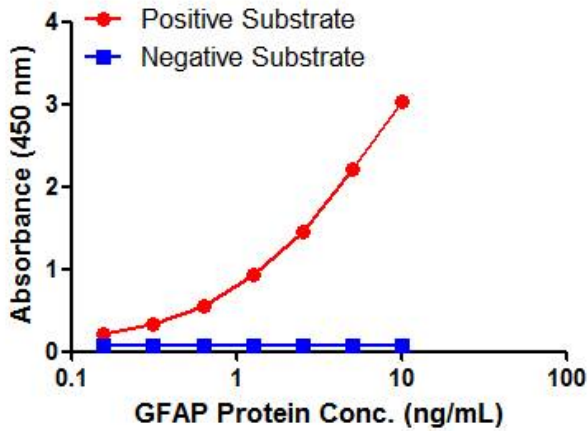
Product data:

Product Type:	Primary Antibodies
Clone Name:	OTI4G7
Applications:	ELISA, LMNX
Reactivity:	Human
Host:	Mouse
Isotype:	IgG1
Clonality:	Monoclonal
Immunogen:	Human recombinant protein fragment corresponding to amino acids 292-432 of human GFAP (NP_002046) produced in E.coli.
Formulation:	PBS (pH7.3) containing 0.05% sodium azide
Concentration:	0.5 mg/ml
Purification:	Purified from mouse ascites fluids or tissue culture supernatant by affinity chromatography (protein A/G)
Conjugation:	Unconjugated
Storage:	Store at -20°C. Avoid repeat freeze/thaw cycles.
Predicted Protein Size:	49.9 kDa
Gene Name:	glial fibrillary acidic protein
Database Link:	NP_002046 Entrez Gene 2670 Human P14136
Background:	This gene encodes one of the major intermediate filament proteins of mature astrocytes. It is used as a marker to distinguish astrocytes from other glial cells during development. Mutations in this gene cause Alexander disease, a rare disorder of astrocytes in the central nervous system. Alternative splicing results in multiple transcript variants encoding distinct isoforms. [provided by RefSeq, Oct 2008]
Synonyms:	ALXDRD
Protein Families:	ES Cell Differentiation/IPS

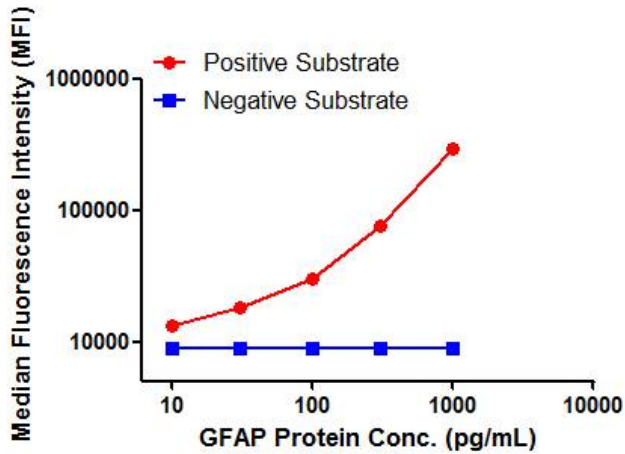


[View online »](#)

Product images:



GFAP ELISA with 4G7 Capture (TA600559 and 10B2 Detection ([TA700559]) Antibodies. Substrate used: Recombinant Human GFAP (KEK293 cells expressed protein)



GFAP Luminex ELISA with 4G7 Capture (TA600559 and 10B2 Detection ([TA700559]) Antibodies. Substrate used: Recombinant Human GFAP (KEK293 cells expressed protein)