

Product datasheet for **TA600558**

IgG4 Mouse Monoclonal Capture Antibody [Clone ID: OTI1C9]

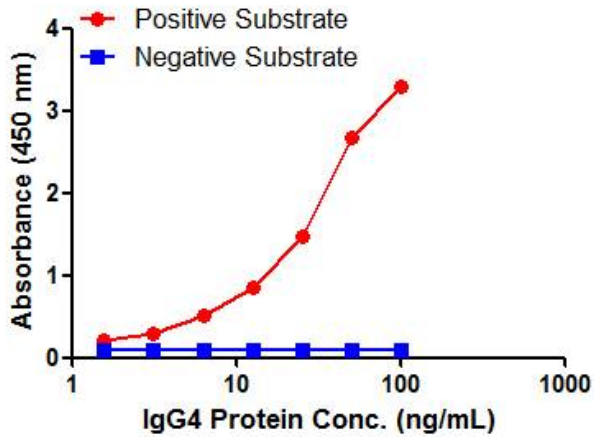
Product data:

Product Type:	Primary Antibodies
Clone Name:	OTI1C9
Applications:	ELISA
Reactivity:	Human
Host:	Mouse
Isotype:	IgG1
Clonality:	Monoclonal
Immunogen:	Native Human IgG4 protein
Formulation:	PBS (pH7.3) containing 0.05% sodium azide
Concentration:	0.5 mg/ml
Purification:	Purified from mouse ascites fluids or tissue culture supernatant by affinity chromatography (protein A/G)
Conjugation:	Unconjugated
Storage:	Store at -20°C. Avoid repeat freeze/thaw cycles.
Predicted Protein Size:	150KD

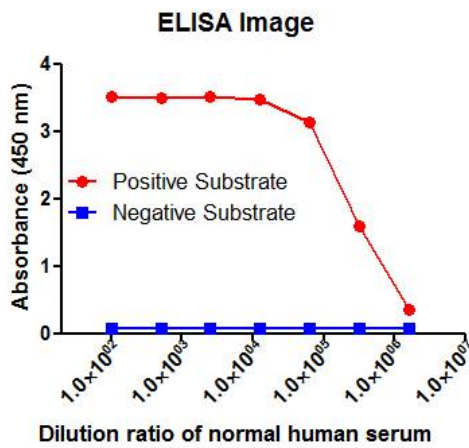


[View online »](#)

Product images:



IgG4 ELISA with 1C9 Capture (TA600558) and 4B12 Detection ([TA700558]) Antibodies. Substrate used: Native Human IgG4



IgG4 ELISA with 1C9 Capture (TA600558) and 4B12 Detection ([TA700558]) Antibodies. Substrate used: Normal human serum