

## Product datasheet for **TA600556**

### IL17 (IL17A) Mouse Monoclonal Capture Antibody [Clone ID: OTI1G8]

#### Product data:

|                         |  |
|-------------------------|--|
| Product Type:           | Primary Antibodies   |
| Clone Name:             | OTI1G8   |
| Applications:           | ELISA, LMNX  |
| Reactivity:             | Human  |
| Host:                   | Mouse  |
| Isotype:                | IgG1   |
| Clonality:              | Monoclonal   |
| Immunogen:              | Full length human recombinant protein of human IL-17A (NP_002181) produced in 293 cell.  |
| Formulation:            | PBS (PH 7.3) containing 0.05% sodium azide.  |
| Concentration:          | 0.5 mg/ml  |
| Purification:           | Purified from mouse ascites fluids or tissue culture supernatant by affinity chromatography (protein A/G)  |
| Conjugation:            | Unconjugated   |
| Storage:                | Store at -20°C.<br>Avoid repeat freeze/thaw cycles.  |
| Predicted Protein Size: | 17.5 kDa   |
| Gene Name:              | interleukin 17A  |
| Database Link:          | <a href="#">NP_002181</a><br><a href="#">Entrez Gene 3605 Human</a><br><a href="#">Q16552</a>  |
| Background:             | The protein encoded by this gene is a proinflammatory cytokine produced by activated T cells. This cytokine regulates the activities of NF-kappaB and mitogen-activated protein kinases. This cytokine can stimulate the expression of IL6 and cyclooxygenase-2 (PTGS2/COX-2), as well as enhance the production of nitric oxide (NO). High levels of this cytokine are associated with several chronic inflammatory diseases including rheumatoid arthritis, psoriasis and multiple sclerosis. [provided by RefSeq, Jul 2008] |
| Synonyms:               | CTLA-8; CTLA8; IL-17; IL-17A; IL17; ILA17  |
| Matched ELISA Pair:     | TA600555, TA700556   |

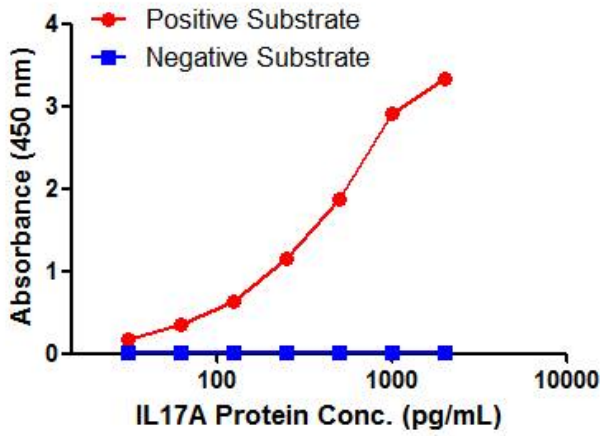


[View online »](#)

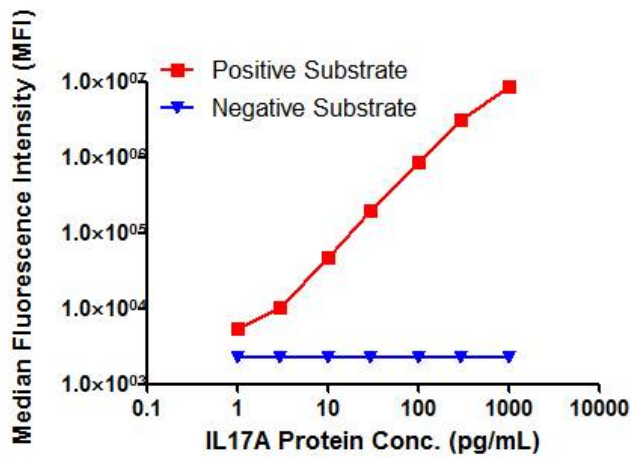
Protein Families: Druggable Genome, Secreted Protein

Protein Pathways: Cytokine-cytokine receptor interaction

**Product images:**



IL17A ELISA with 1G8 Capture (TA600556) and 1E4 Detection ([TA700556]) Antibodies. Substrate used: Recombinant Human IL17A (KEK293 cells expressed protein)



IL17A Luminex ELISA with 1G8 Capture (TA600556) and 1E4 Detection ([TA700556]) Antibodies. Substrate used: Recombinant Human IL17A (KEK293 cells expressed protein)