

Product datasheet for **TA600554**

NGAL (LCN2) Mouse Monoclonal Capture Antibody [Clone ID: OTI6C3]

Product data:

Product Type:	Primary Antibodies
Clone Name:	OTI6C3
Applications:	ELISA, LMNX
Reactivity:	Human
Host:	Mouse
Isotype:	IgG1
Clonality:	Monoclonal
Immunogen:	Human recombinant protein fragment corresponding to amino acids 21-198 of human NGAL (NP_005555) produced in E.coli.
Formulation:	PBS (pH7.3) containing 0.05% sodium azide
Concentration:	0.5 mg/ml
Purification:	Purified from mouse ascites fluids or tissue culture supernatant by affinity chromatography (protein A/G)
Conjugation:	Unconjugated
Storage:	Store at -20°C. Avoid repeat freeze/thaw cycles.
Predicted Protein Size:	22.6 kDa
Gene Name:	lipocalin 2
Database Link:	NP_005555 Entrez Gene 3934 Human P80188



[View online »](#)

Background:

This gene encodes a protein that belongs to the lipocalin family. Members of this family transport small hydrophobic molecules such as lipids, steroid hormones and retinoids. The protein encoded by this gene is a neutrophil gelatinase-associated lipocalin and plays a role in innate immunity by limiting bacterial growth as a result of sequestering iron-containing siderophores. The presence of this protein in blood and urine is an early biomarker of acute kidney injury. This protein is thought to be involved in multiple cellular processes, including maintenance of skin homeostasis, and suppression of invasiveness and metastasis. Mice lacking this gene are more susceptible to bacterial infection than wild type mice. [provided by RefSeq, Sep 2015]

Synonyms:

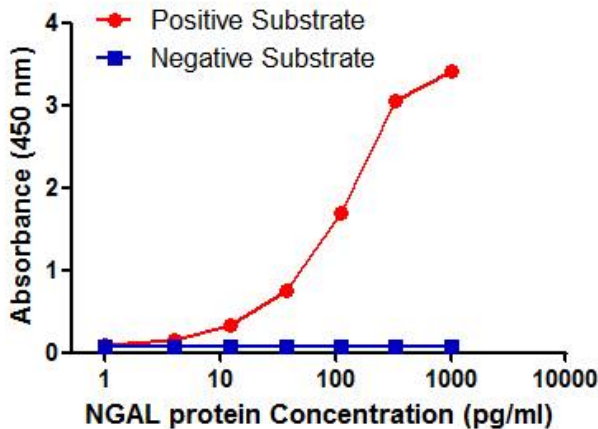
24p3; MSFI; NGAL; p25

Matched ELISA Pair:

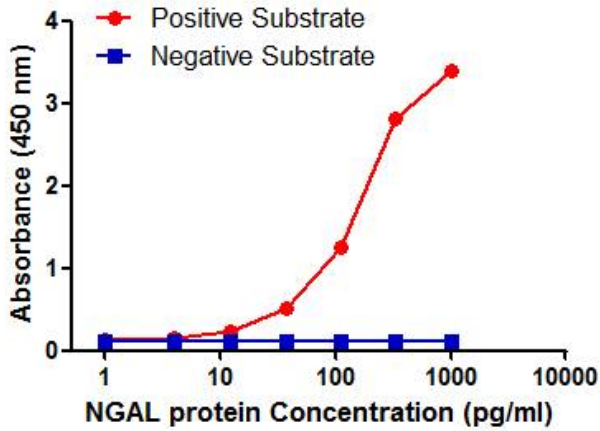
TA700554, TA700555

Protein Families:

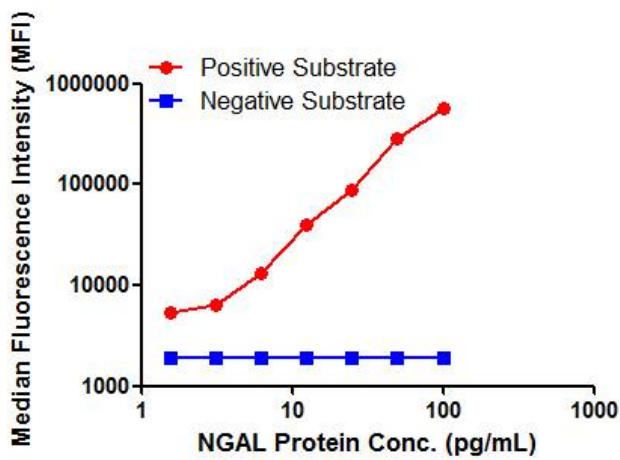
Secreted Protein

Product images:

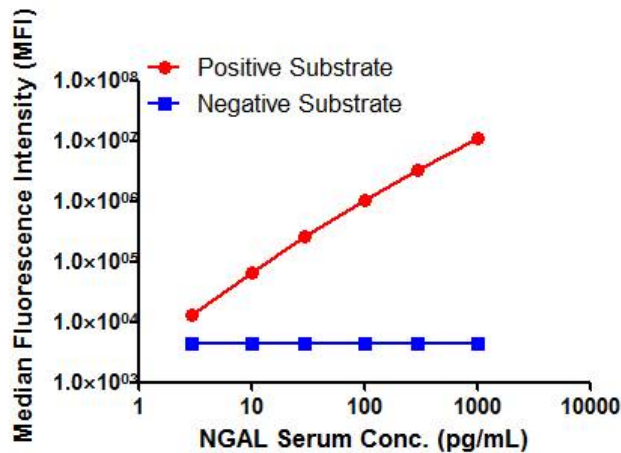
NGAL ELISA with 6C3 Capture (TA600554) and 10C8 Detection ([TA700554]) Antibodies. Substrate used: Recombinant Human NGAL (HEK293 cells expressed protein)



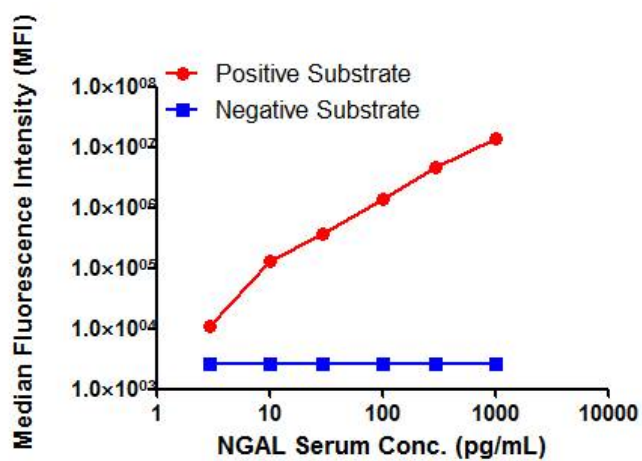
NGAL ELISA with 6C3 Capture (TA600554) and 10F11 Detection ([TA700555]) Antibodies. Substrate used: Recombinant Human NGAL (HEK293 cells expressed protein)



NGAL Luminex ELISA with 6C3 Capture (TA600554) and 10C8 Detection ([TA700554]) Antibodies. Substrate used: Recombinant Human NGAL (HEK293 cells expressed protein)



NGAL Luminex ELISA with 6C3 Capture (TA600554) and 10C8 Detection ([TA700554]) Antibodies. Substrate used: NGAL Serum



NGAL Luminex ELISA with 6C3 Capture (TA600554) and 10F11 Detection ([TA700555]) Antibodies. Substrate used: NGAL Serum