

Product datasheet for **TA600553**

ST2 (IL1RL1) Mouse Monoclonal Capture Antibody [Clone ID: OTI6E12]

Product data:

Product Type:	Primary Antibodies
Clone Name:	OTI6E12
Applications:	ELISA
Reactivity:	Human
Host:	Mouse
Isotype:	IgG1
Clonality:	Monoclonal
Immunogen:	Full length human recombinant protein of human ST2 (NP_057316) produced in HEK293E.
Formulation:	PBS (pH7.3) containing 0.05% sodium azide
Concentration:	0.5 mg/ml
Purification:	Purified from mouse ascites fluids or tissue culture supernatant by affinity chromatography (protein A/G)
Conjugation:	Unconjugated
Storage:	Store at -20°C. Avoid repeat freeze/thaw cycles.
Predicted Protein Size:	63.36 kDa
Gene Name:	interleukin 1 receptor like 1
Database Link:	NP_057316 Entrez Gene 9173 Human Q01638
Background:	The protein encoded by this gene is a member of the interleukin 1 receptor family. Studies of the similar gene in mouse suggested that this receptor can be induced by proinflammatory stimuli, and may be involved in the function of helper T cells. This gene, interleukin 1 receptor, type I (IL1R1), interleukin 1 receptor, type II (IL1R2) and interleukin 1 receptor-like 2 (IL1RL2) form a cytokine receptor gene cluster in a region mapped to chromosome 2q12. Alternative splicing of this gene results in multiple transcript variants. [provided by RefSeq, Jul 2008]
Synonyms:	DER4; FIT-1; IL33R; ST2; ST2L; ST2V; T1

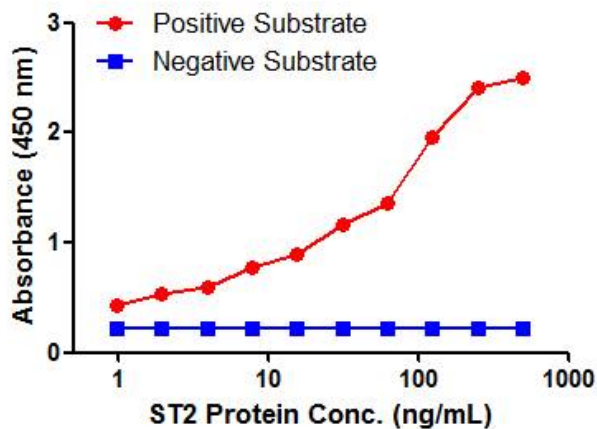


[View online »](#)

Matched ELISA Pair: TA700553

Protein Families: Druggable Genome, Secreted Protein, Transmembrane

Product images:



ST2 ELISA with 6E12 Capture (TA600553) and 21A7 Detection ([TA700553]) Antibodies. Substrate used: Recombinant Human IL-6 (HEK293 cells expressed protein)