

Product datasheet for **TA600551**

PSP (REG1A) Mouse Monoclonal Capture Antibody [Clone ID: OTI2E1]

Product data:

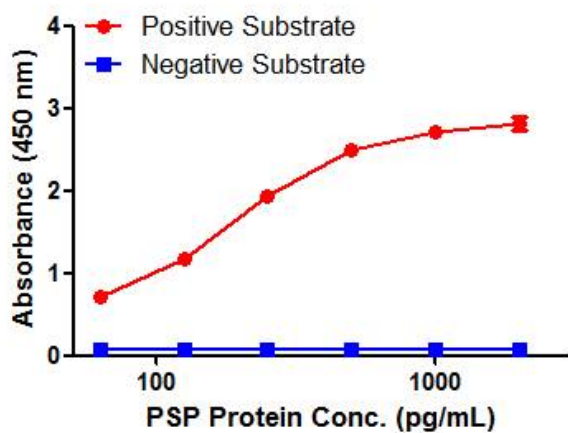
Product Type:	Primary Antibodies
Clone Name:	OTI2E1
Applications:	ELISA
Reactivity:	Human
Host:	Mouse
Isotype:	IgG1
Clonality:	Monoclonal
Immunogen:	Human recombinant protein fragment corresponding to amino acids 23-166 of human PSP (NP_002900) produced in E.coli.
Formulation:	PBS (pH7.3) containing 0.05% sodium azide
Concentration:	0.5 mg/ml
Purification:	Purified from mouse ascites fluids or tissue culture supernatant by affinity chromatography (protein A/G)
Conjugation:	Unconjugated
Storage:	Store at -20°C. Avoid repeat freeze/thaw cycles.
Predicted Protein Size:	18.7 kDa
Gene Name:	regenerating family member 1 alpha
Database Link:	NP_002900 Entrez Gene 5967 Human P05451
Background:	This gene is a type I subclass member of the Reg gene family. The Reg gene family is a multigene family grouped into four subclasses, types I, II, III and IV, based on the primary structures of the encoded proteins. This gene encodes a protein that is secreted by the exocrine pancreas. It is associated with islet cell regeneration and diabetogenesis and may be involved in pancreatic lithogenesis. Reg family members REG1B, REGL, PAP and this gene are tandemly clustered on chromosome 2p12 and may have arisen from the same ancestral gene by gene duplication. [provided by RefSeq, Jul 2008]



[View online »](#)

Synonyms: ICRF; P19; PSP; PSPS; PSPS1; PTP; REG

Product images:



PSP ELISA with 2E1 Capture (TA600551) and 4B9 Detection ([TA700551]) Antibodies. Substrate used: Recombinant Human PSP (E.coli expressed protein)