

Product datasheet for **TA600550**

D-Dimer Mouse Monoclonal Capture Antibody [Clone ID: OTI12F5]

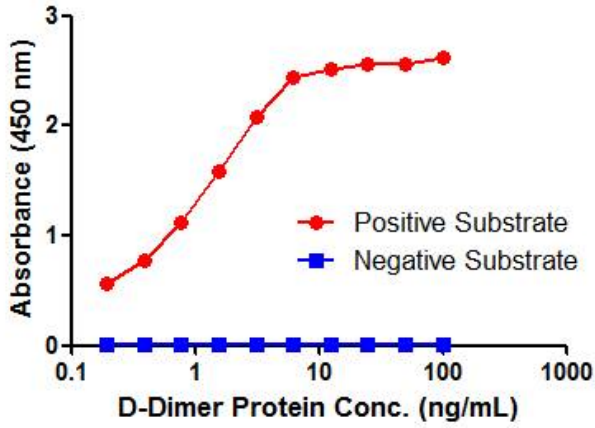
Product data:

| | |
|-------------------------|-----------------------------------------------------------------------------------------------------------|
| Product Type: | Primary Antibodies |
| Clone Name: | OTI12F5 |
| Applications: | ELISA |
| Reactivity: | Human |
| Host: | Mouse |
| Isotype: | IgG1 |
| Clonality: | Monoclonal |
| Immunogen: | Native Human D-Dimer protein |
| Formulation: | PBS (pH7.3) containing 0.05% sodium azide |
| Concentration: | 0.5 mg/ml |
| Purification: | Purified from mouse ascites fluids or tissue culture supernatant by affinity chromatography (protein A/G) |
| Conjugation: | Unconjugated |
| Storage: | Store at -20°C. Avoid repeat freeze/thaw cycles. |
| Predicted Protein Size: | 180KD |
| Matched ELISA Pair: | TA700550 |

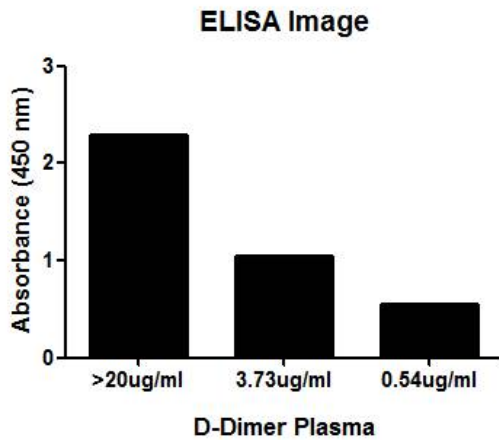


[View online »](#)

Product images:



D-Dimer ELISA with 12F5 Capture (TA600550) and 11H8 Detection ([TA700550]) Antibodies. Substrate used: Native Human D-Dimer protein



D-Dimer ELISA with 12F5 Capture (TA600550) and 11H8 Detection ([TA700550]) Antibodies. Substrate used: D-Dimer plasma (diluted 100 times)