

## Product datasheet for **TA600549**

### AMH Rabbit Monoclonal Capture Antibody [Clone ID: OTIR5D9]

#### Product data:

Product Type:	Primary Antibodies
Clone Name:	OTIR5D9
Applications:	ELISA, LMNX
Reactivity:	Human
Host:	Rabbit
Isotype:	IgG
Clonality:	Monoclonal
Immunogen:	Recombinant protein (26-560aa) of human AMH produced in HEK293
Formulation:	PBS (pH7.3) containing 0.05% sodium azide
Concentration:	0.5 mg/ml
Purification:	Purified from mouse ascites fluids or tissue culture supernatant by affinity chromatography (protein A/G)
Conjugation:	Unconjugated
Storage:	Store at -20°C. Avoid repeat freeze/thaw cycles.
Predicted Protein Size:	59.17 kDa
Gene Name:	anti-Mullerian hormone
Database Link:	<a href="#">NP_000470</a> <a href="#">Entrez Gene 268 Human</a> <a href="#">P03971</a>



[View online »](#)

**Background:**

This gene encodes a secreted ligand of the TGF-beta (transforming growth factor-beta) superfamily of proteins. Ligands of this family bind various TGF-beta receptors leading to recruitment and activation of SMAD family transcription factors that regulate gene expression. The encoded preproprotein is proteolytically processed to generate N- and C-terminal cleavage products that homodimerize and associate to form a biologically active noncovalent complex. This complex binds to the anti-Mullerian hormone receptor type 2 and causes the regression of Mullerian ducts in the male embryo that would otherwise differentiate into the uterus and fallopian tubes. This protein also plays a role in Leydig cell differentiation and function and follicular development in adult females. Mutations in this gene result in persistent Mullerian duct syndrome. [provided by RefSeq, Jul 2016]

**Synonyms:**

MIF; MIS

**Matched ELISA Pair:**

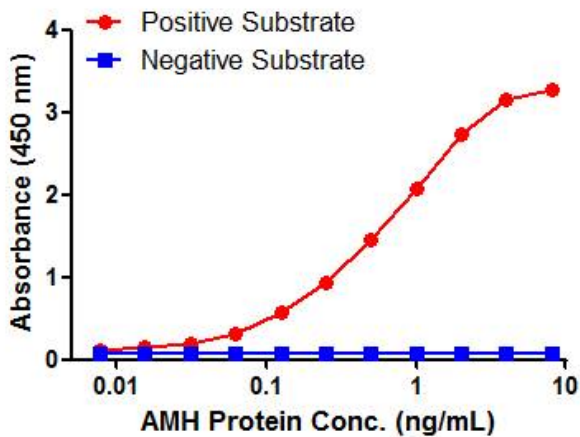
TA700549

**Protein Families:**

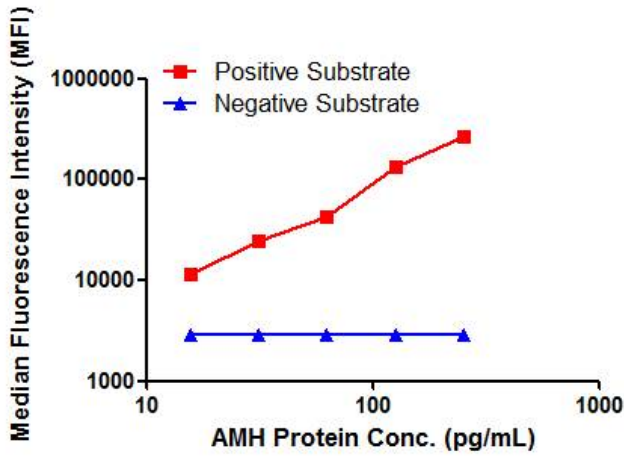
Druggable Genome, Secreted Protein

**Protein Pathways:**

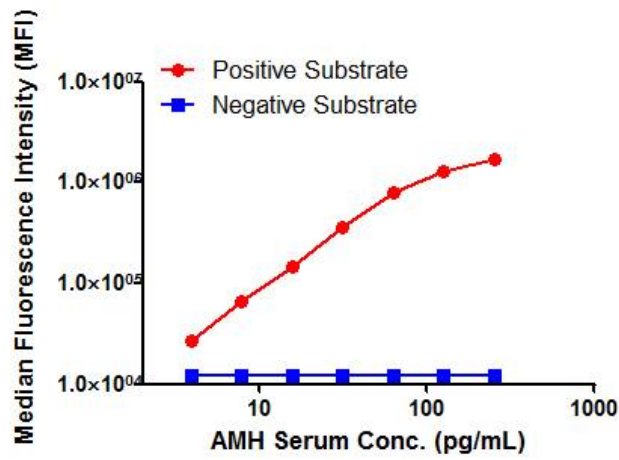
Cytokine-cytokine receptor interaction, TGF-beta signaling pathway

**Product images:**

AMH ELISA with 5D9 Capture (TA600549) and 5C11 Detection ([TA700549]) Antibodies.  
Substrate used: Recombinant Human AMH (CHO cells expressed protein Cat#[TP701045])



AMH Luminex ELISA with 5D9 Capture (TA600549) and 5C11 Detection ([TA700549]) Antibodies. Substrate used: Recombinant Human AMH (CHO cells expressed protein Cat# [TP701045])



AMH Luminex ELISA with 5D9 Capture (TA600549) and 5C11 Detection ([TA700549]) Antibodies. Substrate used: AMH Serum