

## Product datasheet for **TA600545**

### Estrogen Receptor 1 (ESR1) Mouse Monoclonal Capture Antibody [Clone ID: OTI8E9]

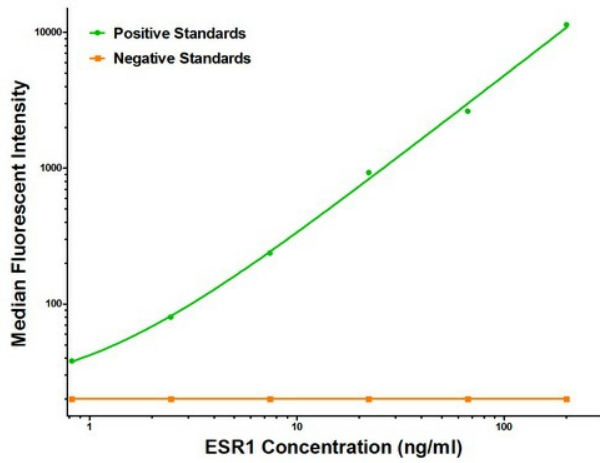
#### Product data:

Product Type:	Primary Antibodies
Clone Name:	OTI8E9
Applications:	ELISA
Recommended Dilution:	ELISA 1:100-1:1000
Reactivity:	Human, Mouse, Rat
Host:	Mouse
Isotype:	IgG1
Clonality:	Monoclonal
Immunogen:	Full length human recombinant protein of human ESR1 (NM_000125) produced in HEK293T cell.
Formulation:	Stored in PBS (pH 7.4) containing 0.05% sodium azide and up to 5% trehalose
Concentration:	0.5 mg/ml
Conjugation:	Unconjugated
Storage:	Store at -20°C. Avoid repeat freeze/thaw cycles.
Stability:	Stable for 12 months from date of receipt.
Gene Name:	estrogen receptor 1
Database Link:	<a href="#">NP_000116</a> <a href="#">Entrez Gene 13982 Mouse</a> <a href="#">Entrez Gene 24890 Rat</a> <a href="#">Entrez Gene 2099 Human</a> <a href="#">P03372</a>
Synonyms:	ER; Era; ESR; ESRA; ESTRR; NR3A1
Matched ELISA Pair:	TA700546, TA700547, TA700548
Protein Families:	Druggable Genome, Nuclear Hormone Receptor, Transcription Factors

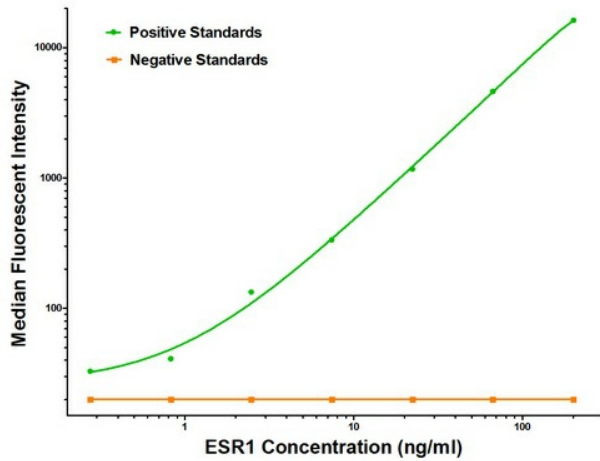


[View online »](#)

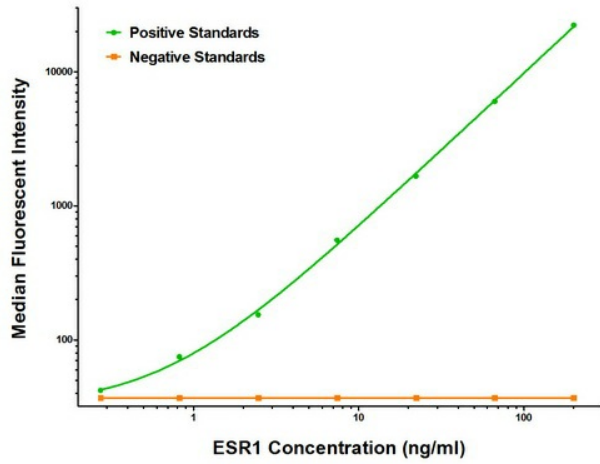
Product images:



ESR1 Luminex with 8E9 Capture (TA600545) and 1B1 Detection ([TA700546]) Antibodies. Substrate used: Recombinant Human ESR1 ([TP313277])



ESR1 Luminex with 8E9 Capture (TA600545) and 2D3 Detection ([TA700548]) Antibodies. Substrate used: Recombinant Human ESR1 ([TP313277])



ESR1 Luminex with 8E9 Capture (TA600545) and 8E9 Detection ([TA700547]) Antibodies. Substrate used: Recombinant Human ESR1 ([TP313277])