

## Product datasheet for **TA600540**

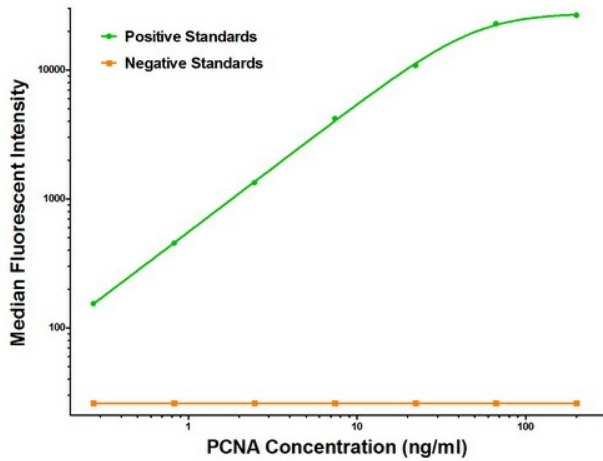
### PCNA Mouse Monoclonal Capture Antibody [Clone ID: OTI2G7]

#### Product data:

Product Type:	Primary Antibodies
Clone Name:	OTI2G7
Applications:	ELISA
Recommended Dilution:	ELISA 1:100-1:1000
Reactivity:	Human, Mouse, Rat
Host:	Mouse
Isotype:	IgG1
Clonality:	Monoclonal
Immunogen:	Full length human recombinant protein of human PCNA (NM_002592) produced in HEK293T cell.
Formulation:	Stored in PBS (pH 7.4) containing 0.05% sodium azide and up to 5% trehalose
Concentration:	0.5 mg/ml
Conjugation:	Unconjugated
Storage:	Store at -20°C. Avoid repeat freeze/thaw cycles.
Stability:	Stable for 12 months from date of receipt.
Gene Name:	proliferating cell nuclear antigen
Database Link:	<a href="#">NP_002583</a> <a href="#">Entrez Gene 18538 Mouse</a> <a href="#">Entrez Gene 25737 Rat</a> <a href="#">Entrez Gene 5111 Human</a> <a href="#">P12004</a>
Synonyms:	ATLD2
Matched ELISA Pair:	TA700540
Protein Families:	Druggable Genome, Stem cell - Pluripotency
Protein Pathways:	Base excision repair, Cell cycle, DNA replication, Mismatch repair, Nucleotide excision repair



[View online »](#)

**Product images:**

PCNA Luminex with 2G7 Capture (TA600540) and 1H10 Detection ([TA700540]) Antibodies.  
Substrate used: Recombinant Human PCNA ([TP301741])