

Product datasheet for **TA600538**

PCNA Mouse Monoclonal Capture Antibody [Clone ID: OTI4G3]

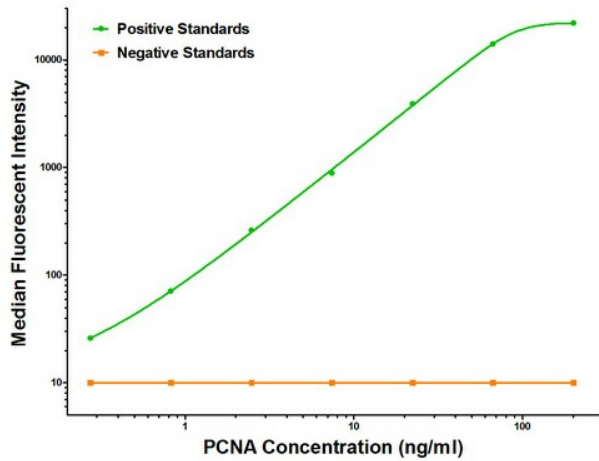
Product data:

Product Type:	Primary Antibodies
Clone Name:	OTI4G3
Applications:	ELISA
Recommended Dilution:	ELISA 1:100-1:1000
Reactivity:	Human, Mouse, Rat
Host:	Mouse
Isotype:	IgG1
Clonality:	Monoclonal
Immunogen:	Full length human recombinant protein of human PCNA (NM_002592) produced in HEK293T cell.
Formulation:	Stored in PBS (pH 7.4) containing 0.05% sodium azide and up to 5% trehalose
Concentration:	0.5 mg/ml
Conjugation:	Unconjugated
Storage:	Store at -20°C. Avoid repeat freeze/thaw cycles.
Stability:	Stable for 12 months from date of receipt.
Gene Name:	proliferating cell nuclear antigen
Database Link:	NP_002583 Entrez Gene 18538 Mouse Entrez Gene 25737 Rat Entrez Gene 5111 Human P12004
Synonyms:	ATLD2
Matched ELISA Pair:	TA700538, TA700541
Protein Families:	Druggable Genome, Stem cell - Pluripotency
Protein Pathways:	Base excision repair, Cell cycle, DNA replication, Mismatch repair, Nucleotide excision repair

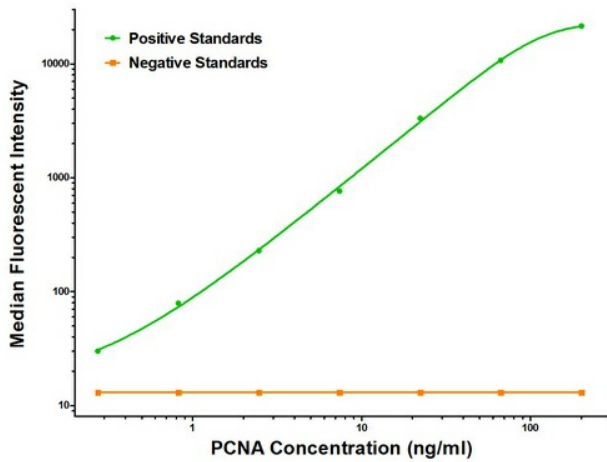


[View online »](#)

Product images:



PCNA Luminex with 4G3 Capture (TA600538) and 1D11 Detection ([TA700538]) Antibodies. Substrate used: Recombinant Human PCNA ([TP301741])



PCNA Luminex with 4G3 Capture (TA600538) and 4A2 Detection ([TA700541]) Antibodies. Substrate used: Recombinant Human PCNA ([TP301741])