

## Product datasheet for **TA600535**

### Calprotectin (S100A9) Mouse Monoclonal Capture Antibody [Clone ID: OTI7B1]

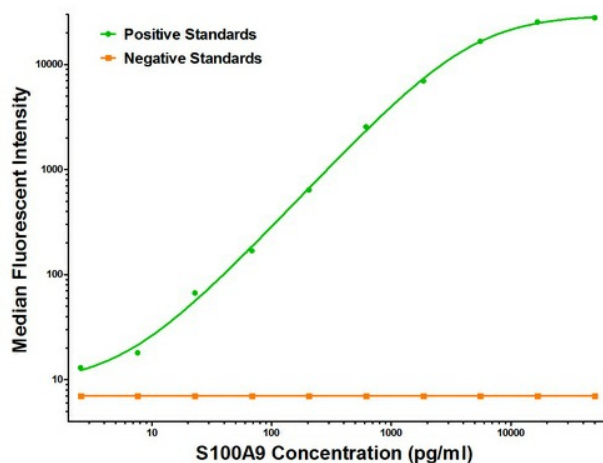
#### Product data:

Product Type:	Primary Antibodies
Clone Name:	OTI7B1
Applications:	ELISA
Recommended Dilution:	ELISA 1:100-1:1000
Reactivity:	Human
Host:	Mouse
Isotype:	IgG1
Clonality:	Monoclonal
Immunogen:	Full length human recombinant protein of human S100A9 (NM_002965) produced in HEK293T cell.
Formulation:	Stored in PBS (pH 7.4) containing 0.05% sodium azide and up to 5% trehalose
Concentration:	0.5 mg/ml
Conjugation:	Unconjugated
Storage:	Store at -20°C. Avoid repeat freeze/thaw cycles.
Stability:	Stable for 12 months from date of receipt.
Gene Name:	S100 calcium binding protein A9
Database Link:	<a href="#">NP_002956</a> <a href="#">Entrez Gene 6280 Human</a> <a href="#">P06702</a>
Synonyms:	60B8AG; CAGB; CFAG; CGLB; L1AG; LIAG; MAC387; MIF; MRP14; NIF; P14
Matched ELISA Pair:	TA700050



[View online »](#)

## Product images:



S100A9 Luminex with 7B1 Capture (TA600535) and Anti-Tag 1B12 Detection ([TA700050]) Antibodies. Substrate used: Recombinant Human S100A9 ([TP308250])