

## Product datasheet for **TA600534**

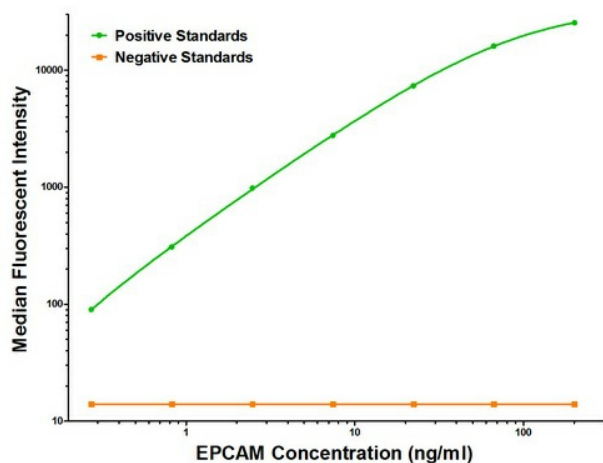
### EPCAM Mouse Monoclonal Capture Antibody [Clone ID: OTI3B2]

#### Product data:

Product Type:	Primary Antibodies
Clone Name:	OTI3B2
Applications:	ELISA
Recommended Dilution:	ELISA 1:100-1:1000
Reactivity:	Human
Host:	Mouse
Isotype:	IgG1
Clonality:	Monoclonal
Immunogen:	Full length human recombinant protein of human EPCAM (NM_002354) produced in HEK293T cell.
Formulation:	Stored in PBS (pH 7.4) containing 0.05% sodium azide and up to 5% trehalose
Concentration:	0.5 mg/ml
Conjugation:	Unconjugated
Storage:	Store at -20°C. Avoid repeat freeze/thaw cycles.
Stability:	Stable for 12 months from date of receipt.
Gene Name:	epithelial cell adhesion molecule
Database Link:	<a href="#">NP_002345</a> <a href="#">Entrez Gene 4072 Human</a> <a href="#">P16422</a>
Synonyms:	DIAR5; EGP-2; EGP40; EGP314; ESA; HNPCC8; KS1/4; KSA; M4S1; MIC18; MK-1; TACSTD1; TROP1
Matched ELISA Pair:	TA700534
Protein Families:	ES Cell Differentiation/IPS, Transmembrane



[View online »](#)

**Product images:**

EPCAM Luminex with 3B2 Capture (TA600534) and 2B1 Detection ([TA700534]) Antibodies. Substrate used: Recombinant Human EPCAM ([TP301989])